

IP Interface for the Somfy Digital Network (SDN) & RS485 URTSII

Internet Protocol (IP) Interface Product Options



Cat # 1810815
IP Interface Only



+



=

Cat # 1810870: Interface and DB9/RJ45
Adapter (9015028)
Use for Single URTSII (RS232)



+



+



=

Cat # 1810850: Interface, RS232/RS485
Adapter (1810496) and DB9/RJ45
Adapter (9015029)
Use for SDN and multiple URTSII's
over RS485 network

1 IP Interface for the SDN

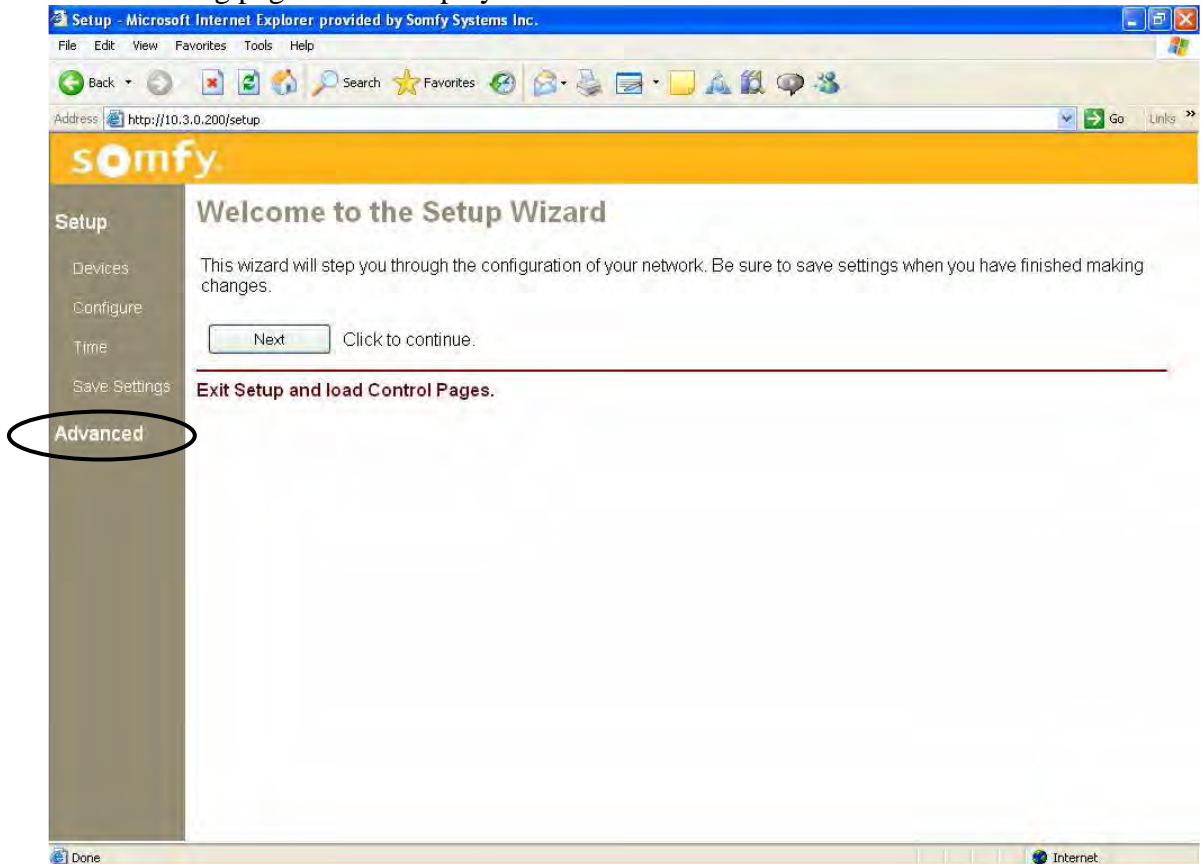
The IP interface for the **Somfy Digital Network (SDN)** is a serial device server used to connect Somfy ILT2 motors and control devices to an IP network. The firmware is remotely upgradeable through HTTP port 80, unproxied. The SDN IP Interface contains an embedded web server and configuration software that is accessed via Internet Explorer.

2 Initial Setup – Firmware Update

Note: Firmware Update should only be done prior to creating any control pages as all memory is erased by this function.

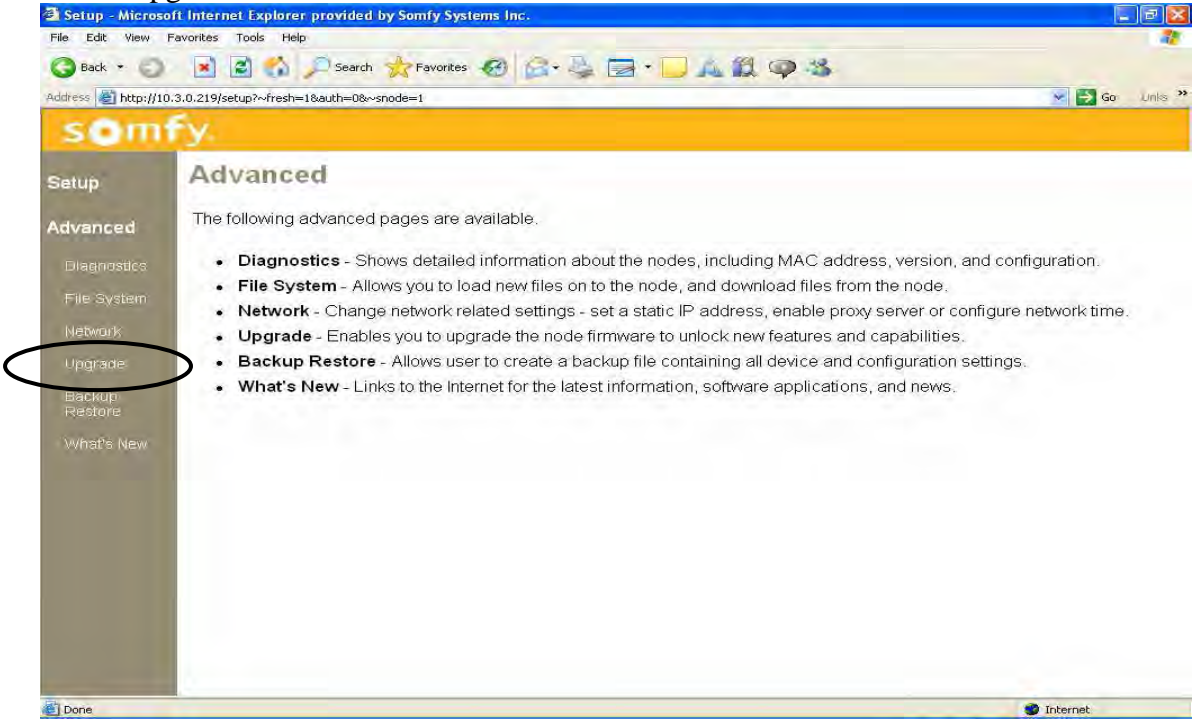
Open Internet Explorer and type: `http://somfy/setup`

The following page will be displayed:

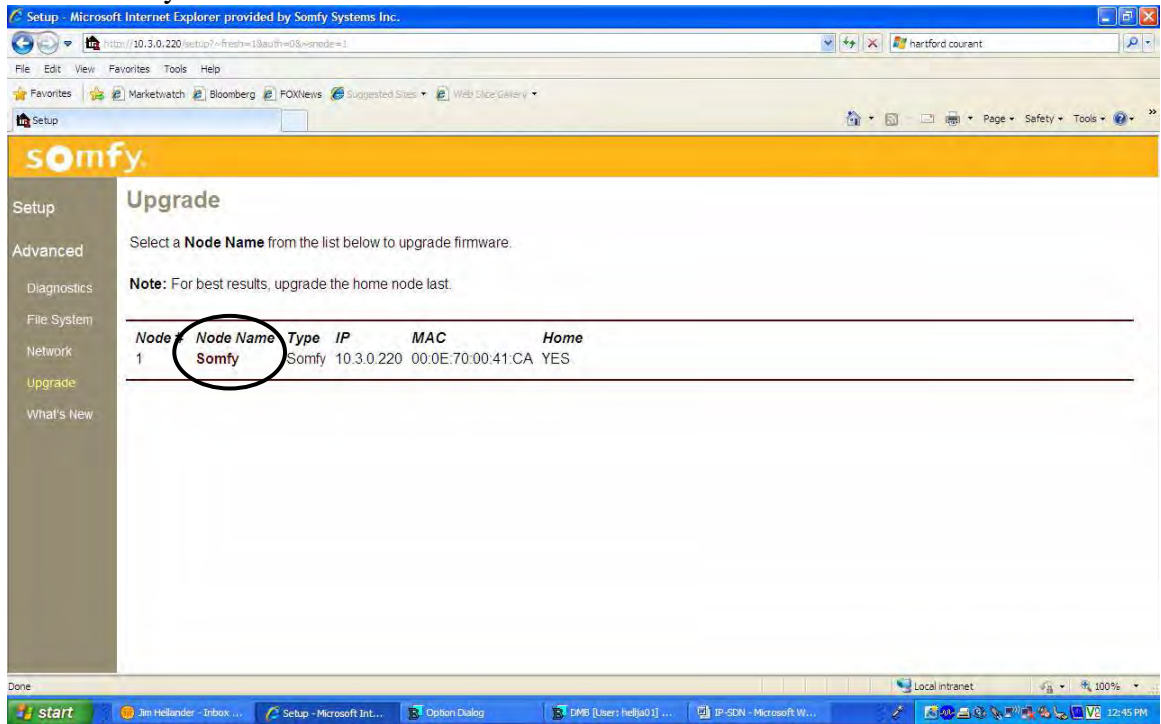


Select Advanced as shown above:

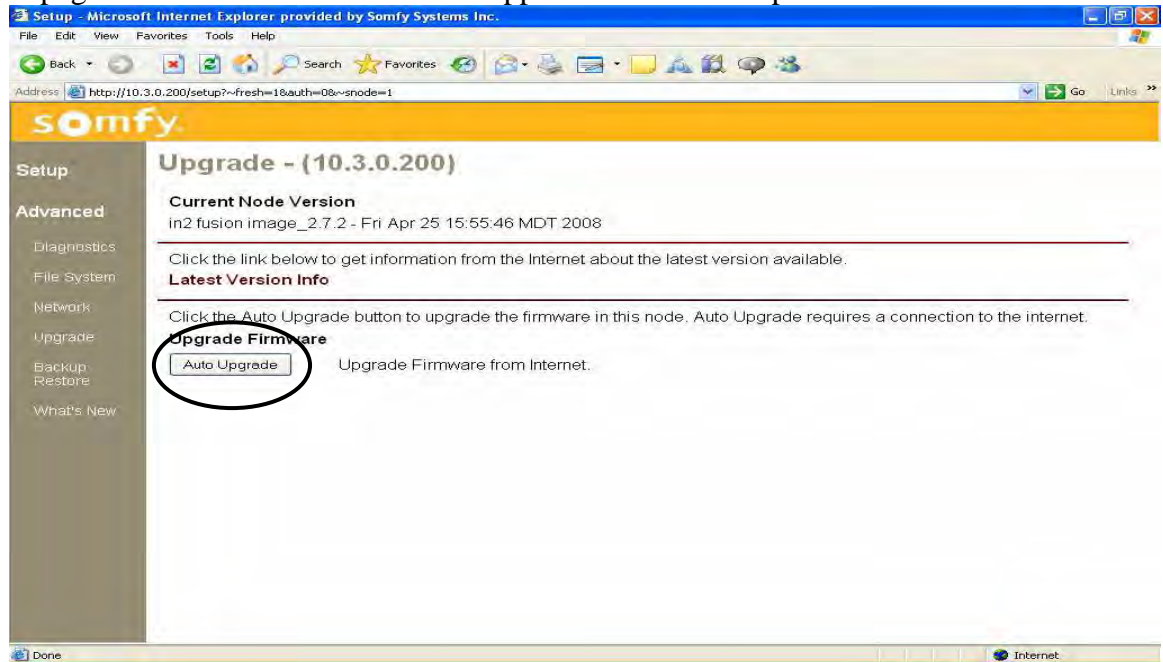
Select Upgrade:



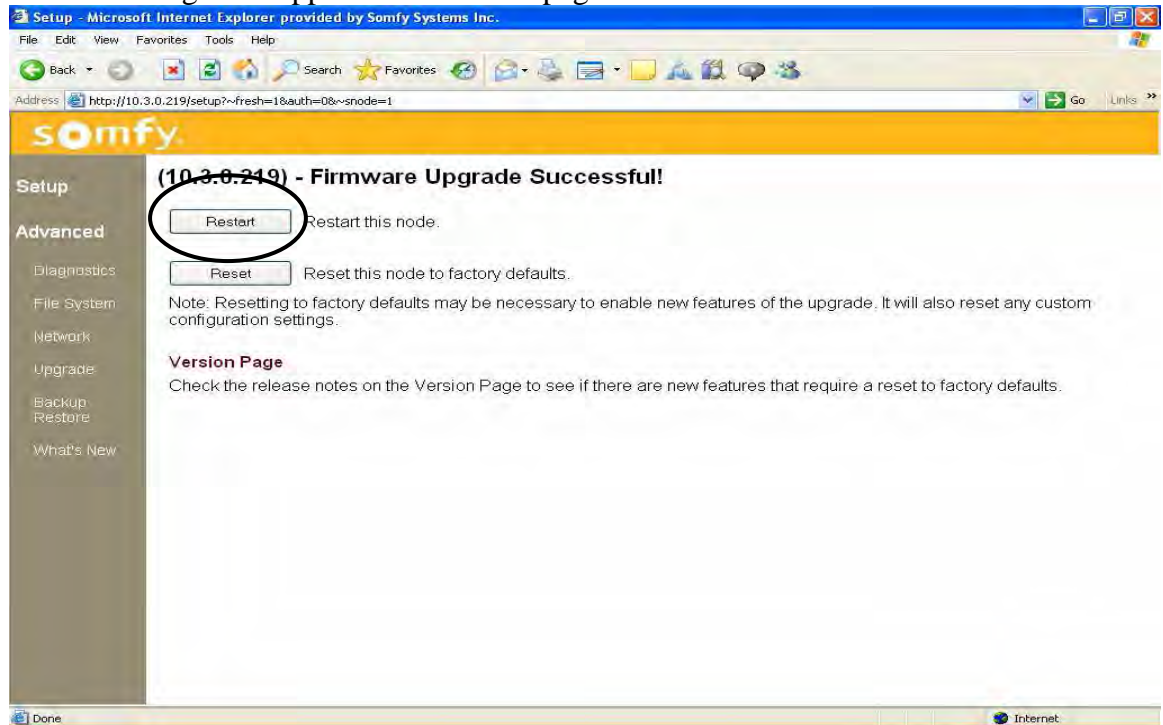
Select Somfy under Node Name:



A page similar to the one shown will appear. Select Auto Update:



A wait message will appear and then this page:

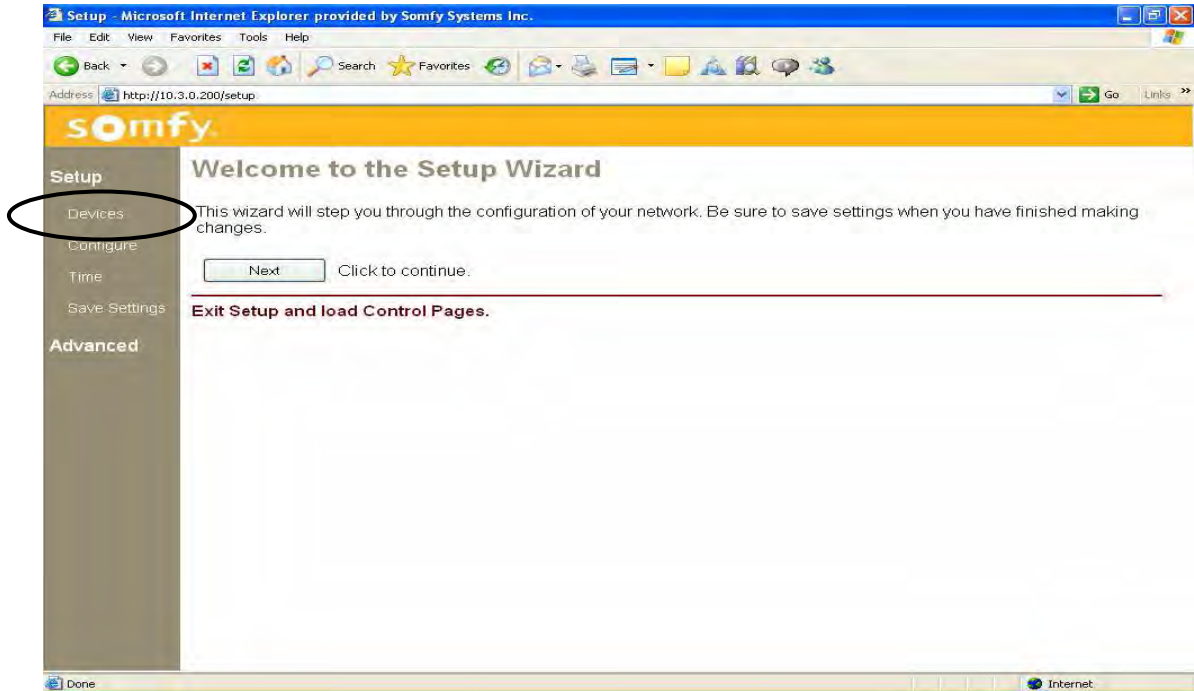


Select Restart.

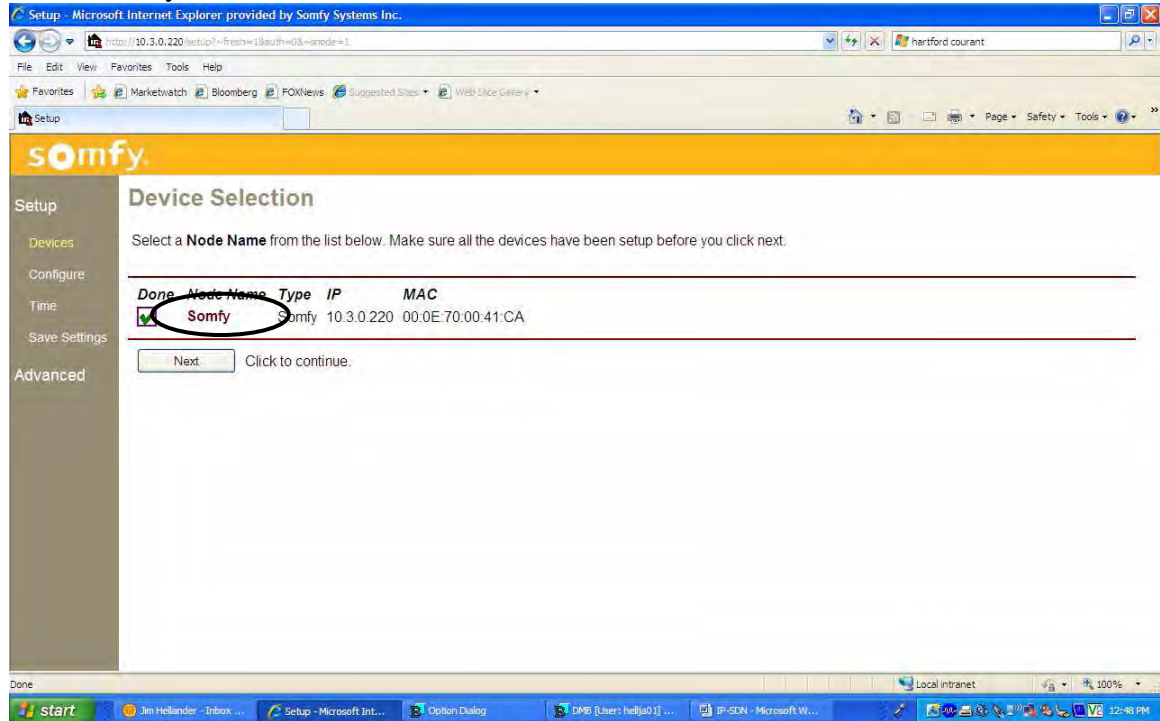
3 Choose SDN IP Type

(for addressable URTSII see section 5)

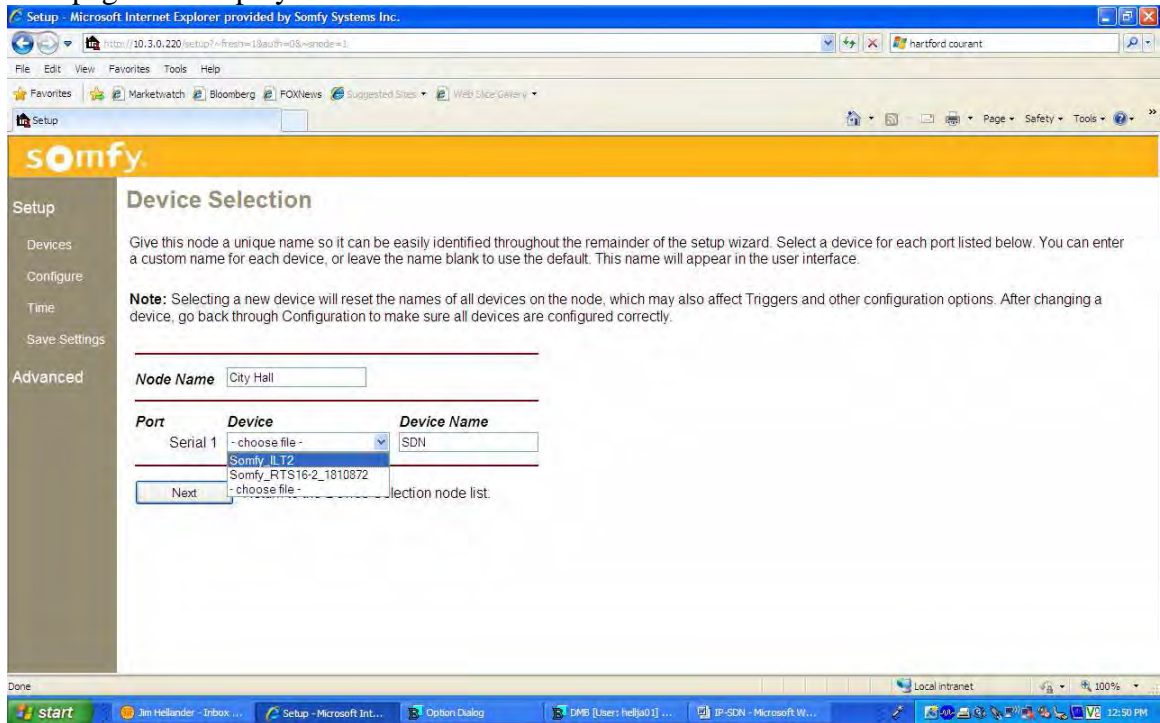
Select Devices:



Select Somfy:



This page will display:

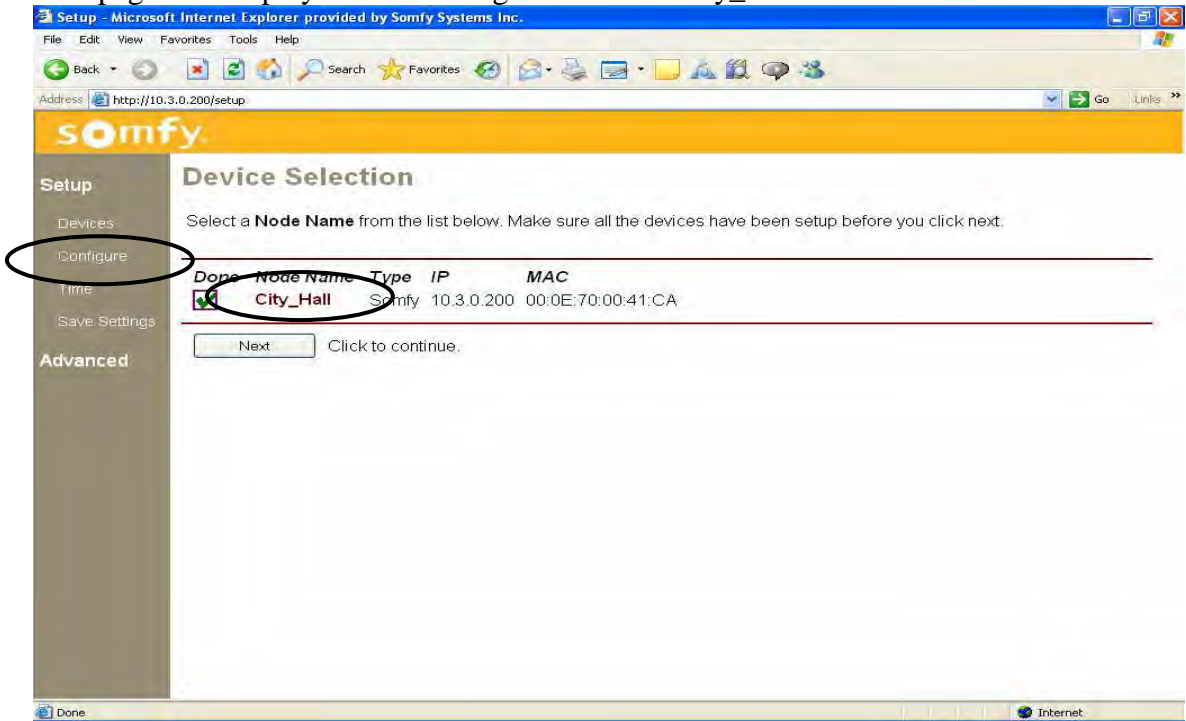


Choose unique node name such as the customer name (City Hall)

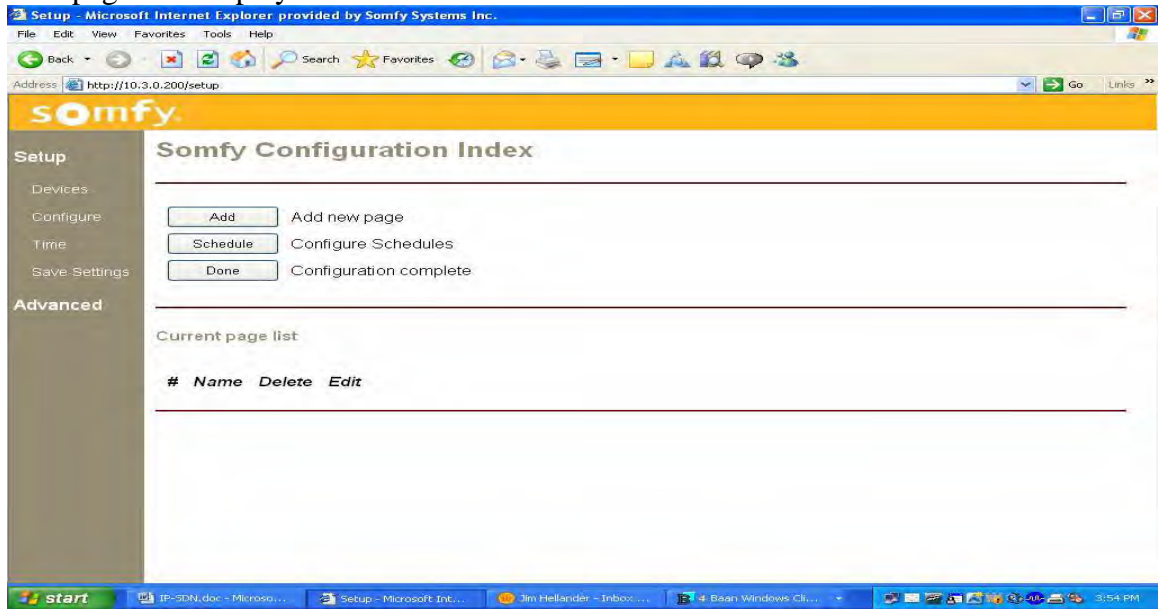
Choose device name such as SDN

Choose Somfy_ILT2 from drop down menu and select Next

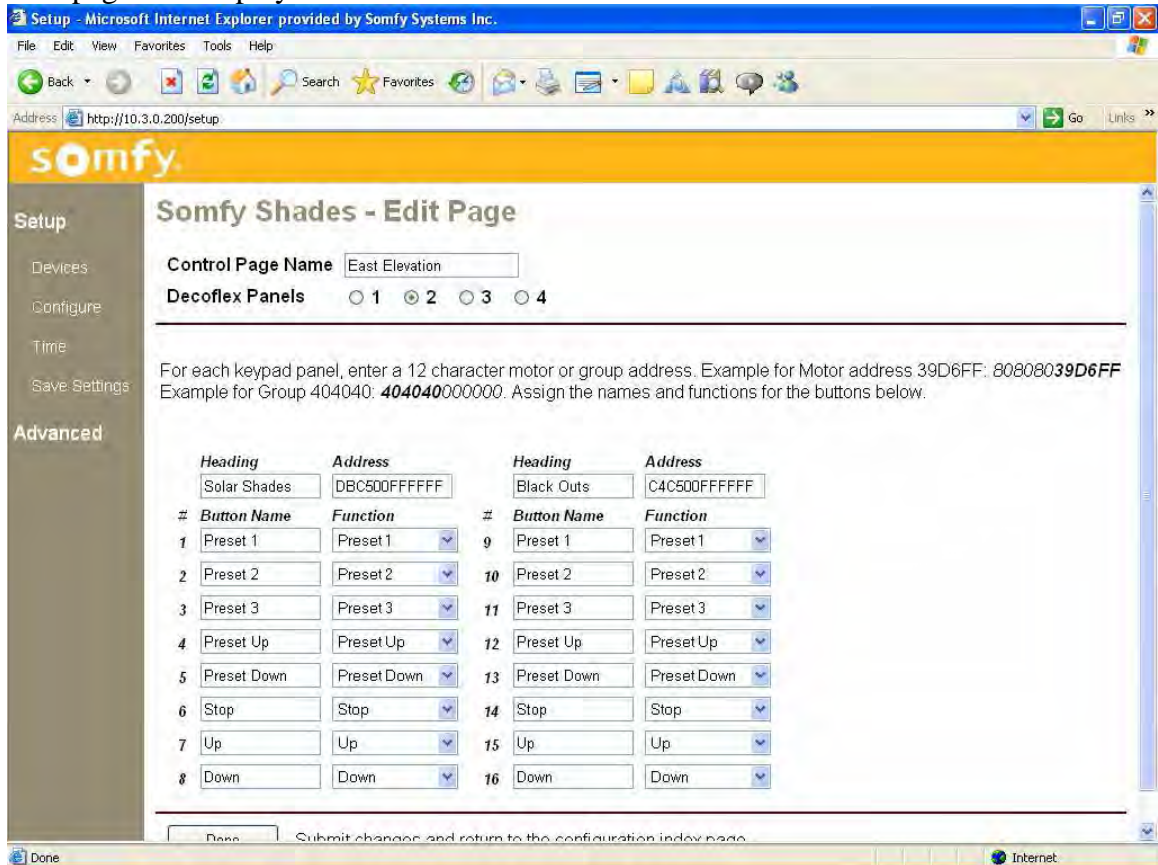
This page will display: Select Configure and then City_Hall



This page will display. Select Add.

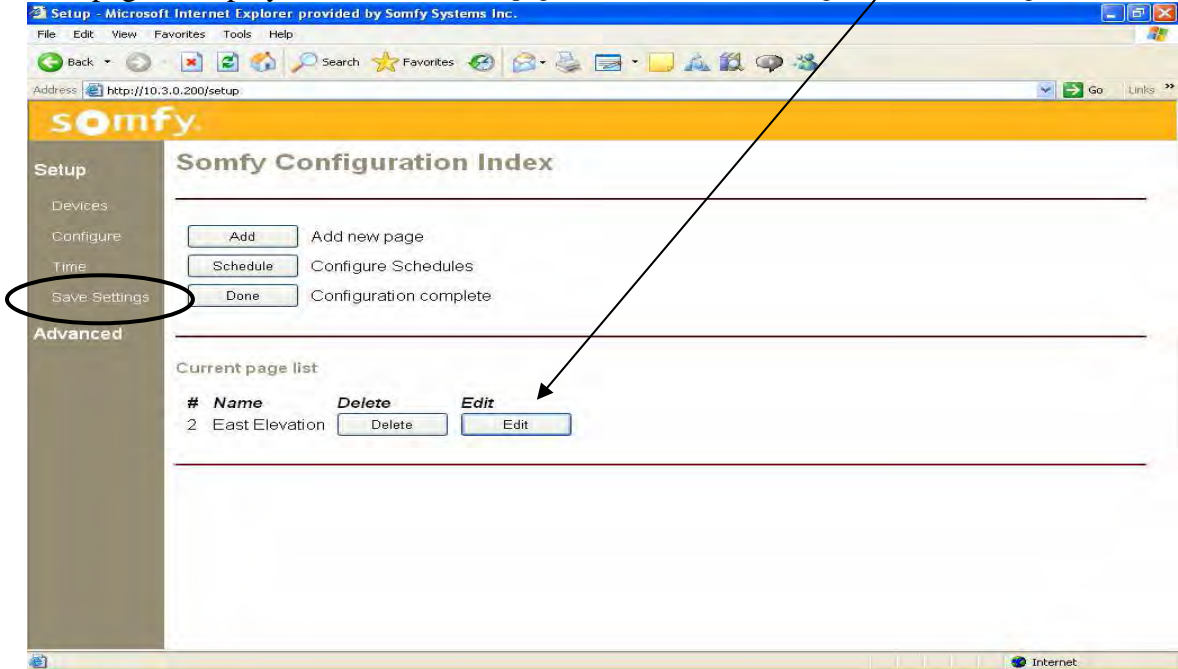


This page will display:



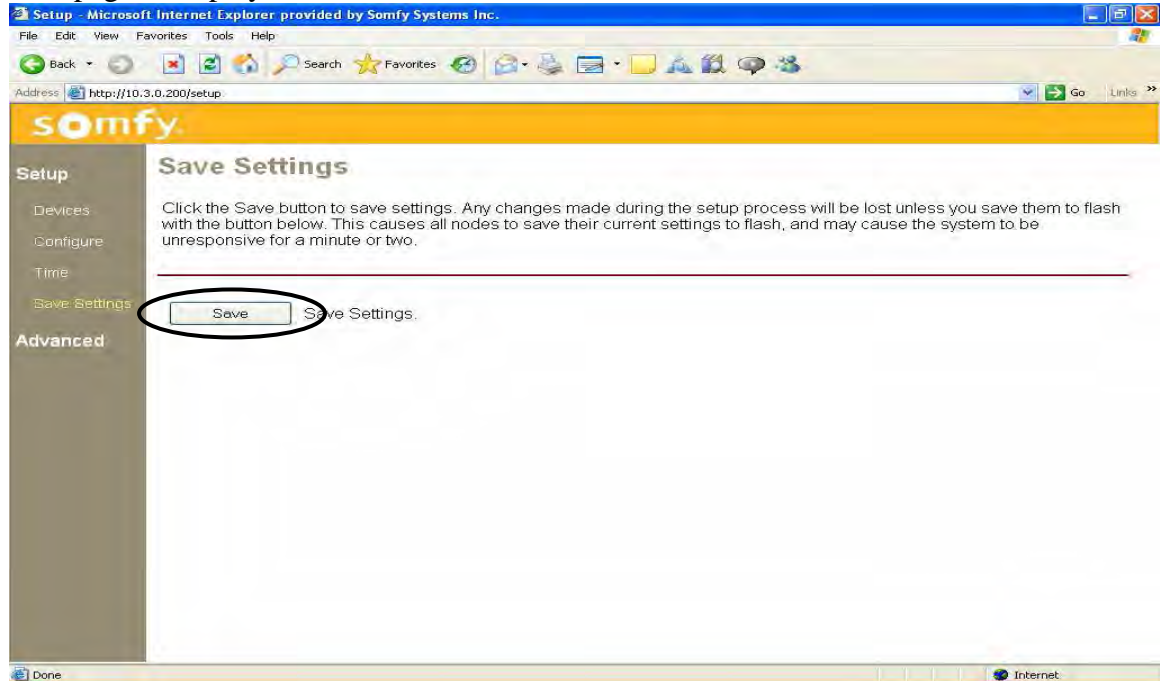
Choose unique Control Page Name, number of panels (e.g. 2), headings and addresses. For further information on Addresses and Functions, see SDN instructions. When complete select Done.

This page is displayed: (Note: this is the page to return to if an existing GUI needs editing)



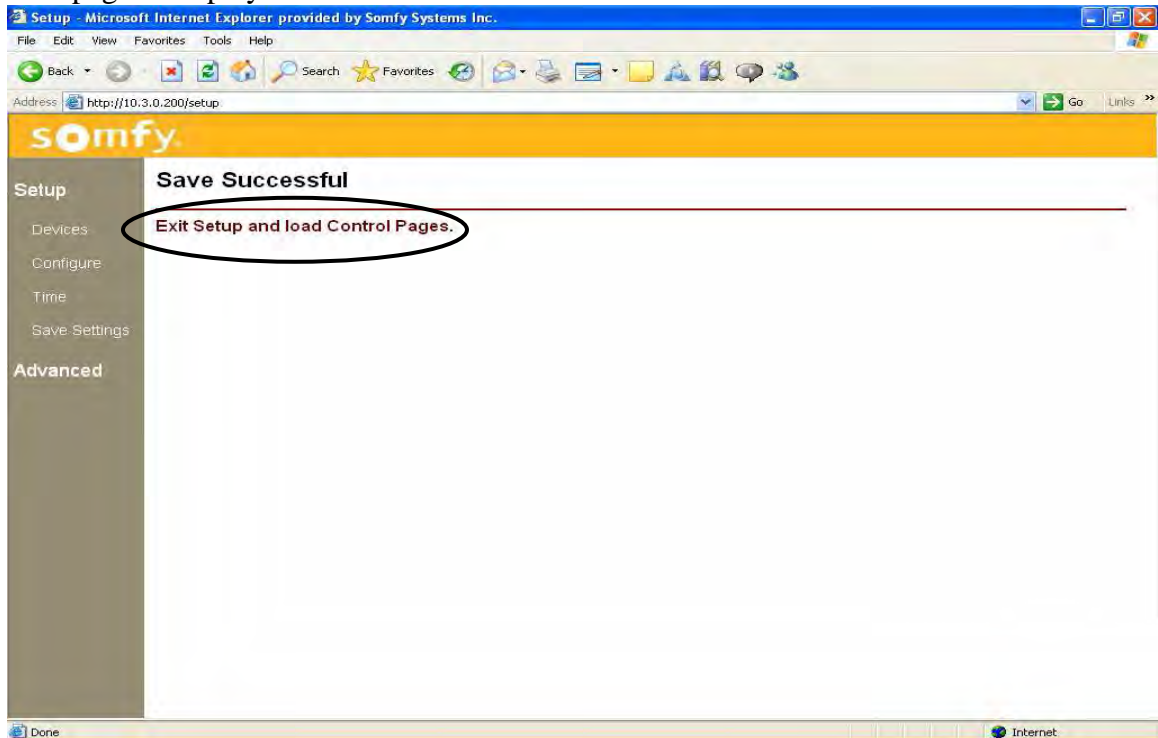
At this point the system should be tested. Select Save Settings.

This page is displayed:



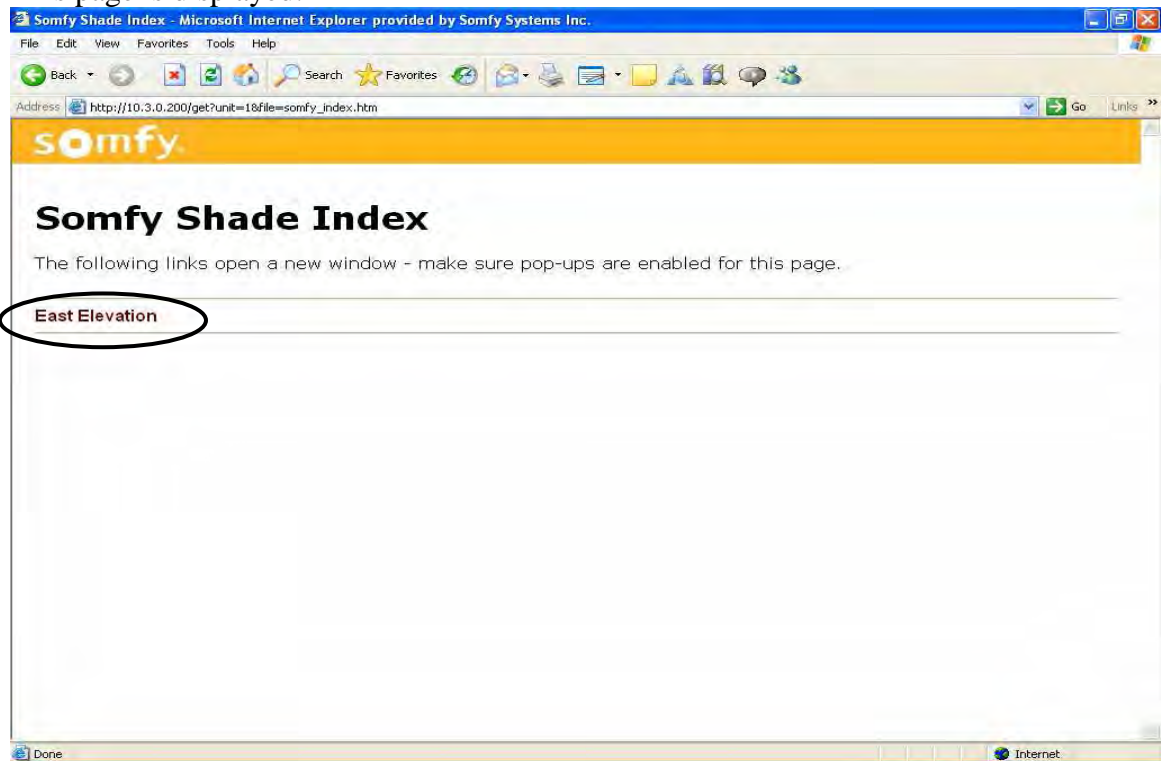
Select Save

This page is displayed after 10 seconds:



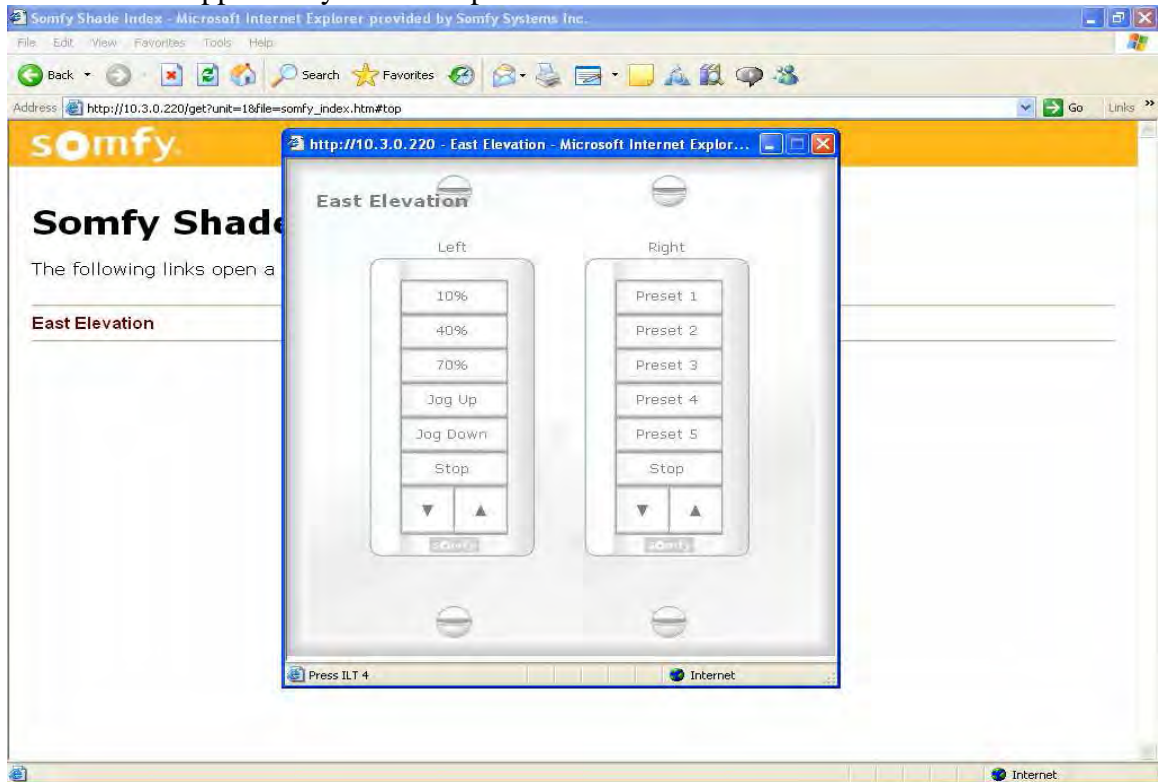
Select Exit Setup and load Control Pages

This page is displayed:



Select East Elevation

The GUI will appear on your desktop:

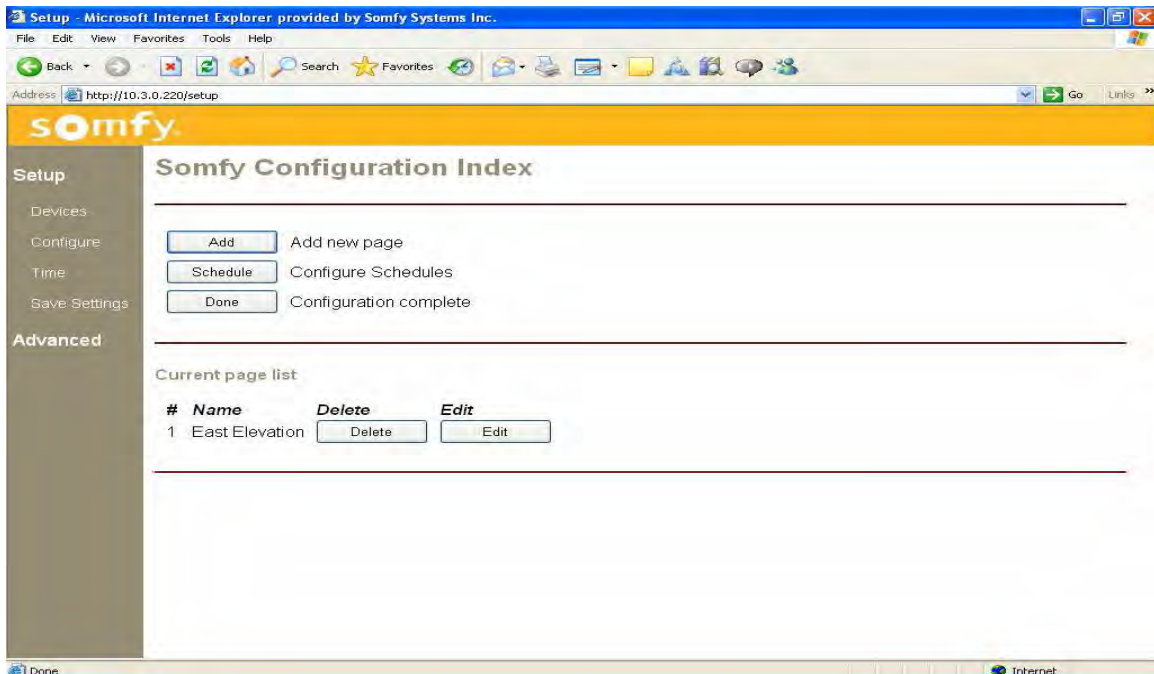


Activate a function by selecting one of the buttons on the GUI.

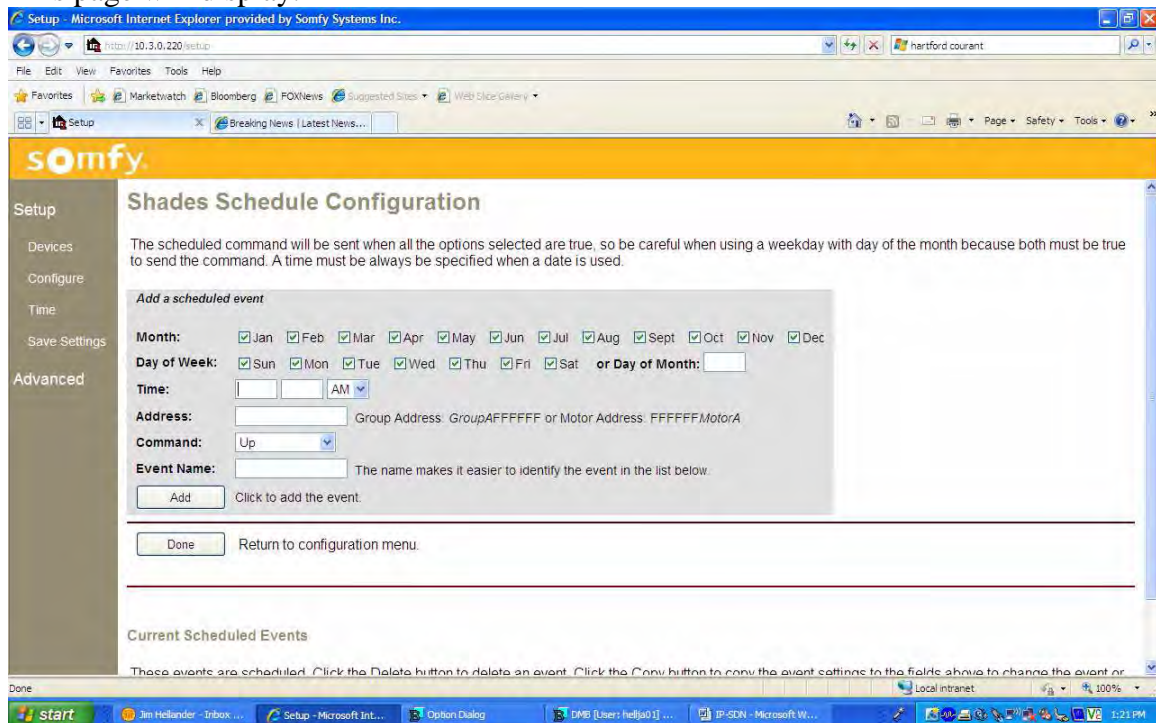
4 Time Schedules (Internet access is required for time schedules)

Choose Configure from the menu on the left and then click on the node name. The following page will display. (type somfy/setup in I.E.)

Choose Schedule.



This page will display:



Enter the required information for the timed event:

Month and Day(s)

Time

Address (group or individual)

Command

Unique event name

When done then click Add. Repeat the process for each timed event.

When all events are entered, click Done.

Click Done again.

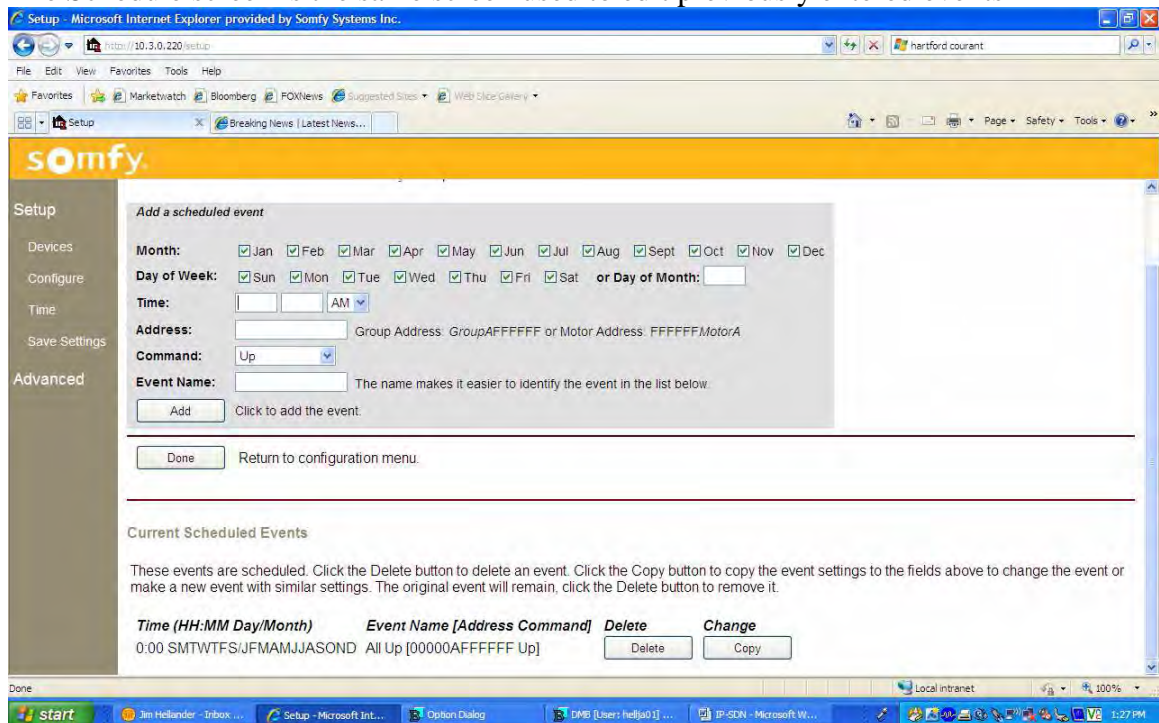
Click Save Settings in left column

Click Save

Click on "Exit Setup and Load Control pages"

A list of GUI pages is shown. Time events are active.

The Schedule screen is the same screen used to edit previously entered events



To edit an event, click copy and make the necessary changes.

Enter unique event name

Click Add.

Delete the original event.

Click Done when editing is complete.

Click Done again.

Click Save Settings in left column

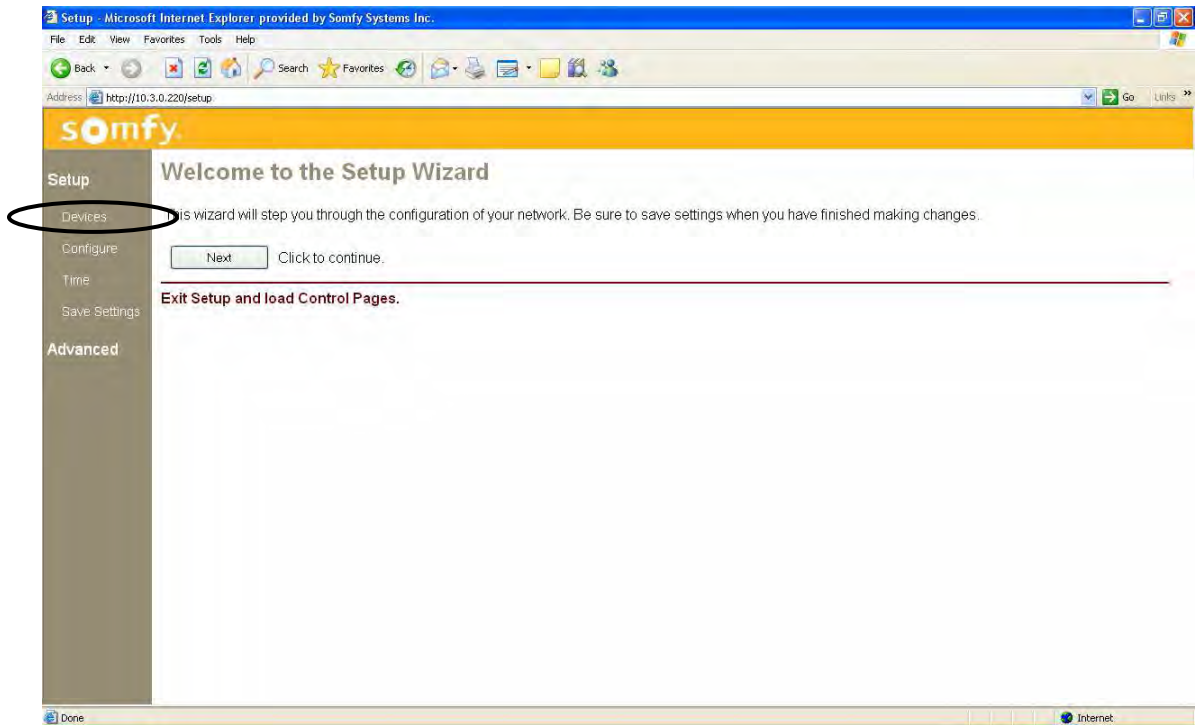
Click Save

Click on “Exit Setup and Load Control pages”

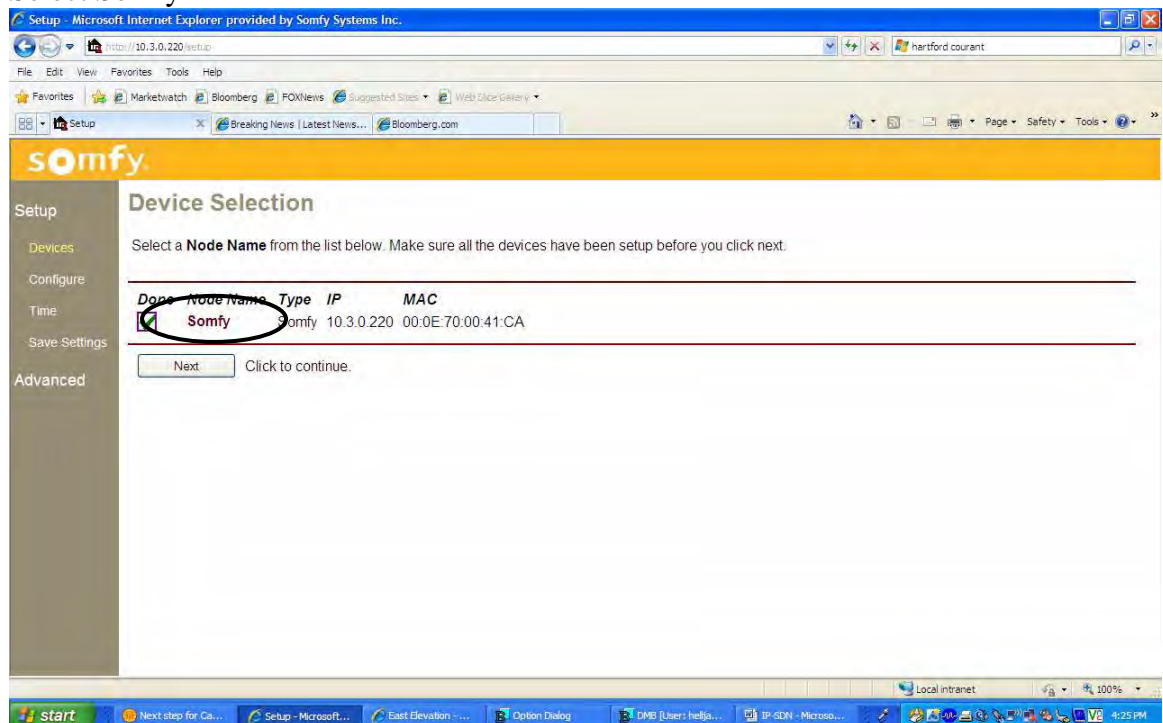
A list of GUI pages is shown. Time events are active

5 IP For Addressable URTSII

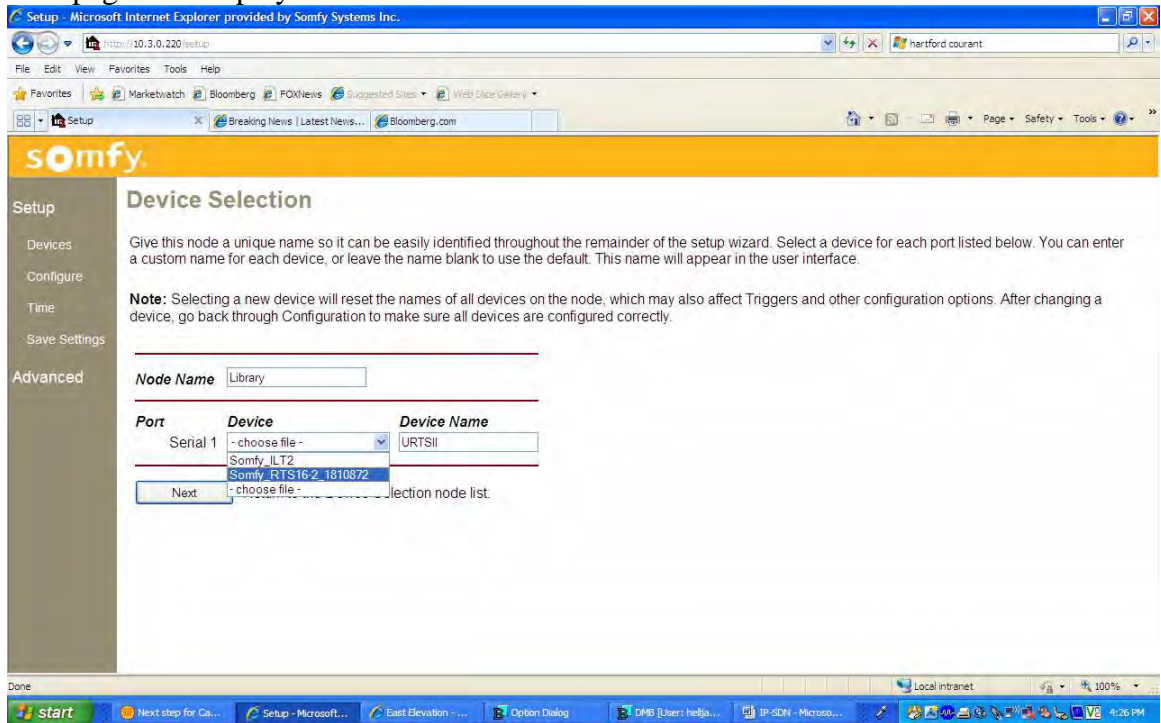
Select Devices



Select Somfy

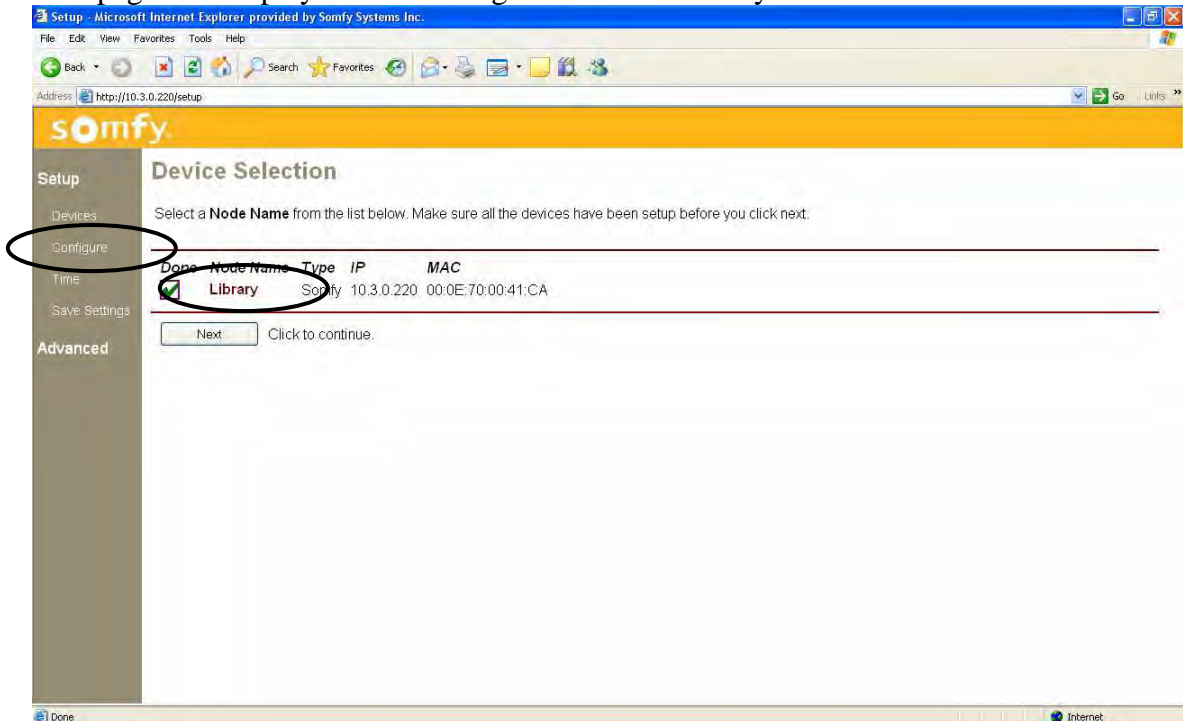


This page will display:

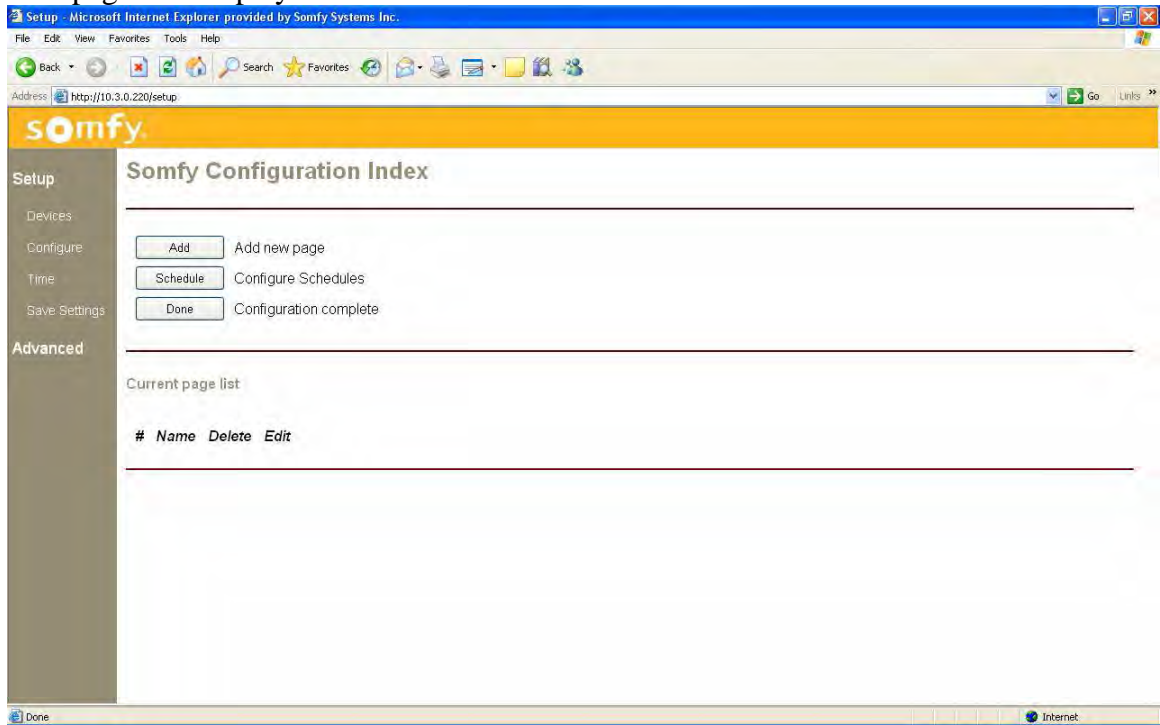


Choose unique node name such as the customer name (Library)
Choose device name such as URTSII
Choose Somfy_URTSI(16_2) from drop down menu and select Next

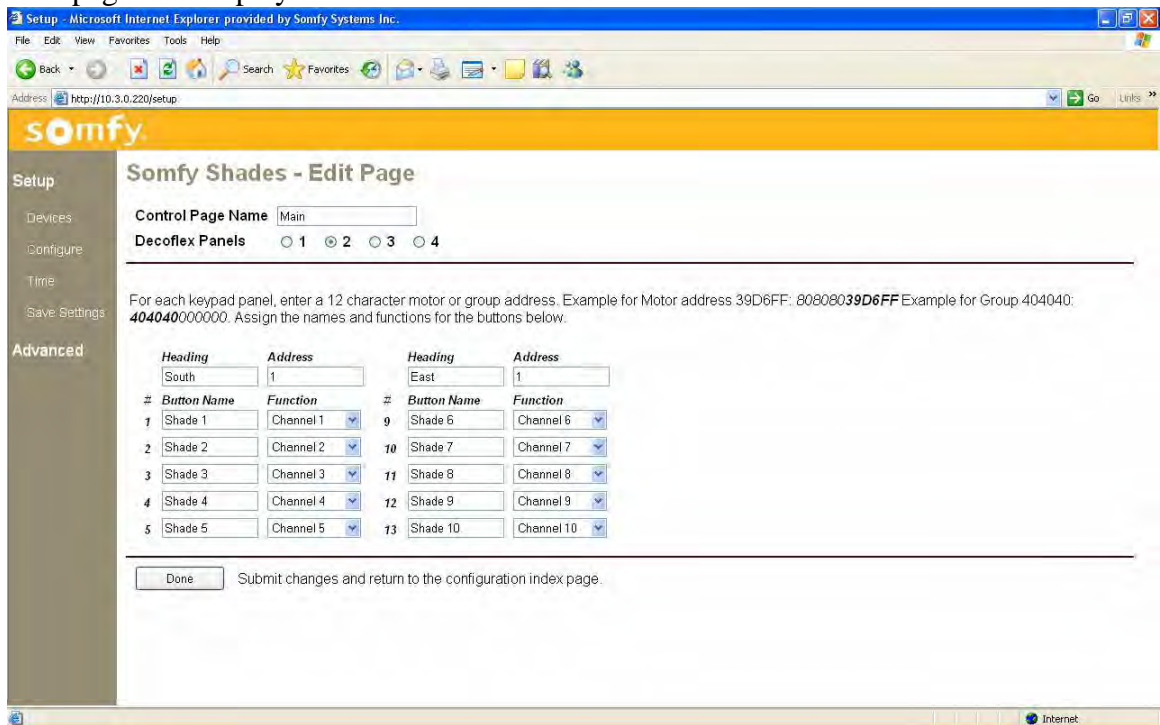
This page will display: Select Configure and then Library



This page will display. Select Add

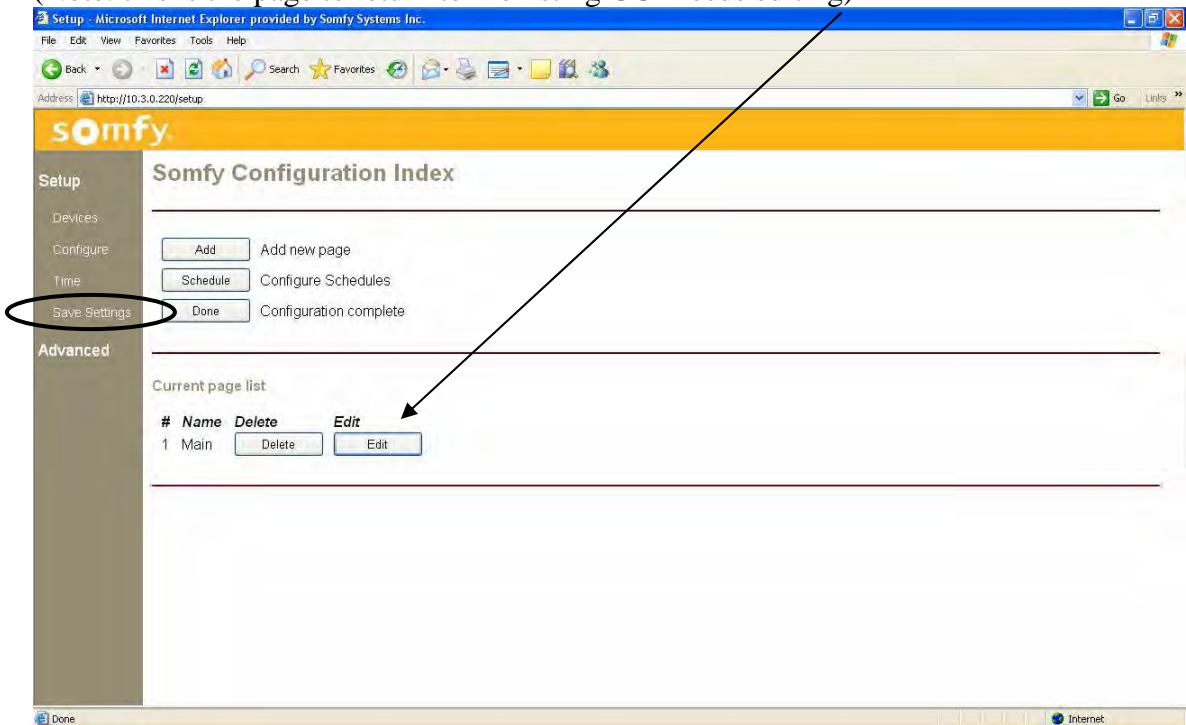


This page will display:

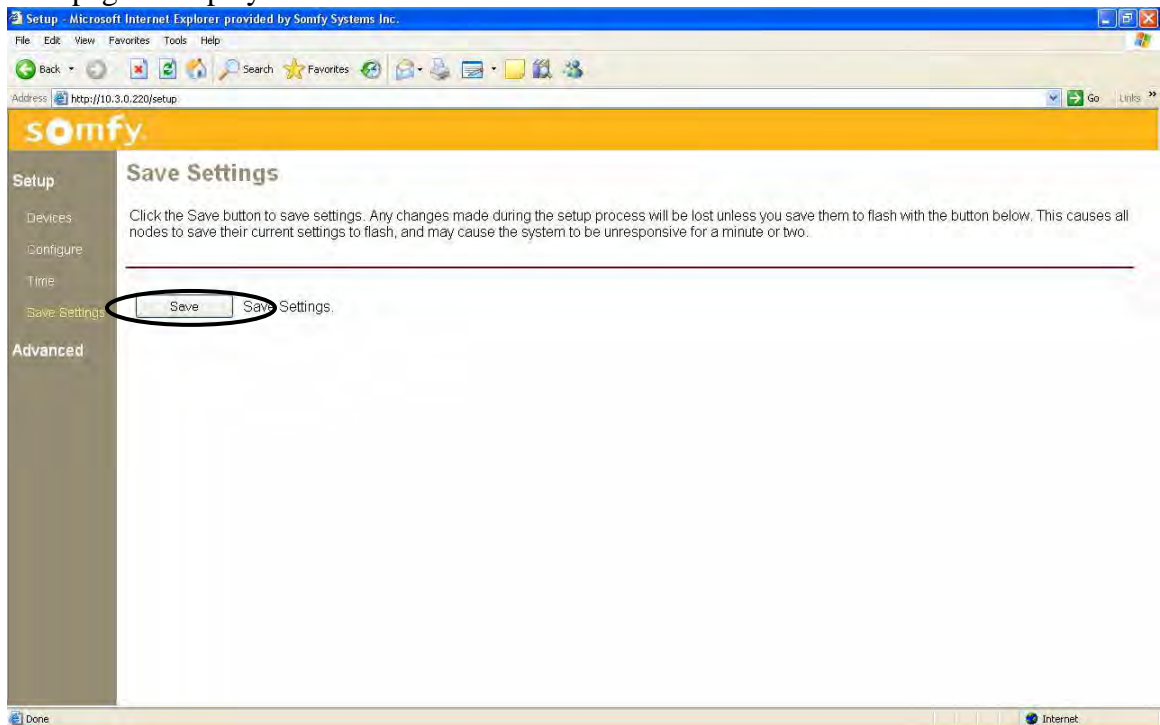


Choose unique Control Page Name, number of panels (e.g. 2), headings and URTSII addresses. For further information on Addresses and Functions, see URTSII instructions. When complete select Done.

(Note: this is the page to return to if existing GUI needs editing)

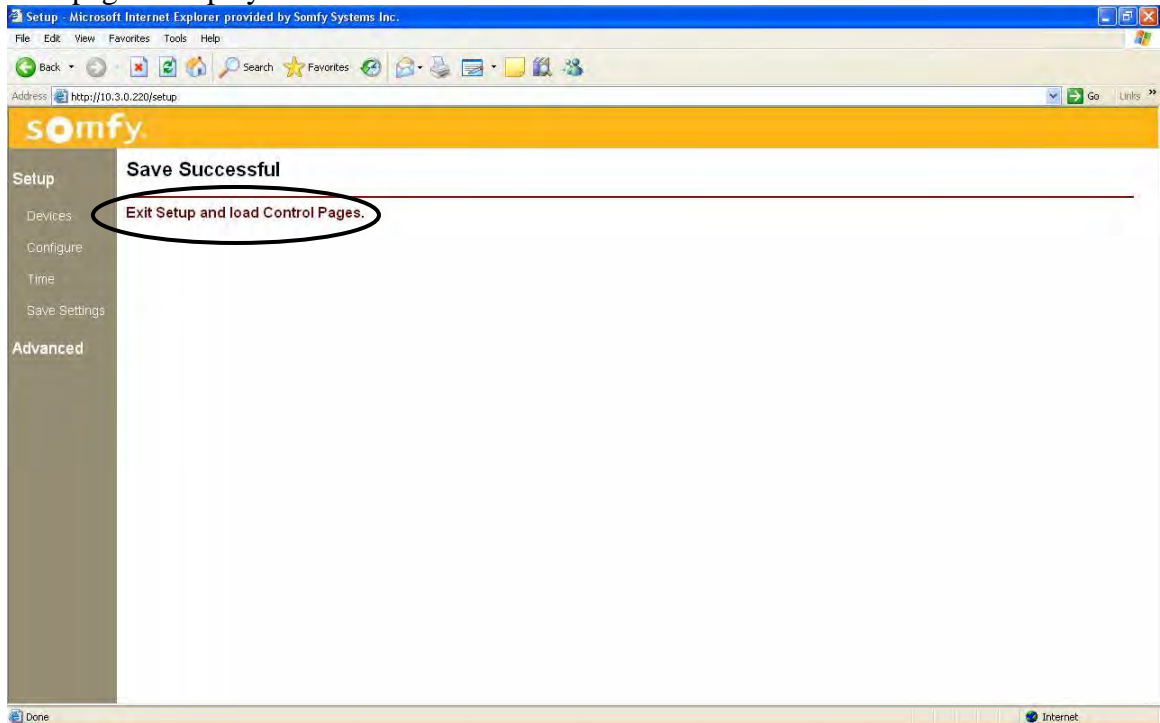


At this point the system should be tested. Select Save Settings.
This page is displayed:

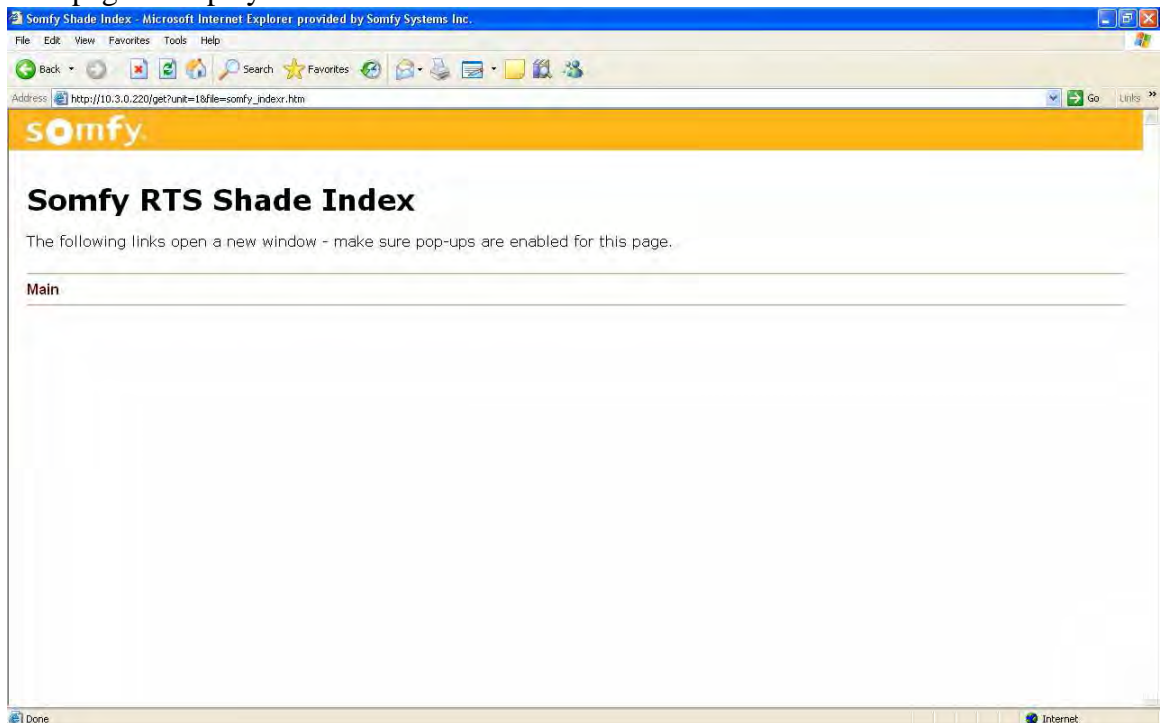


Select Save

This page is displayed after 10 seconds:

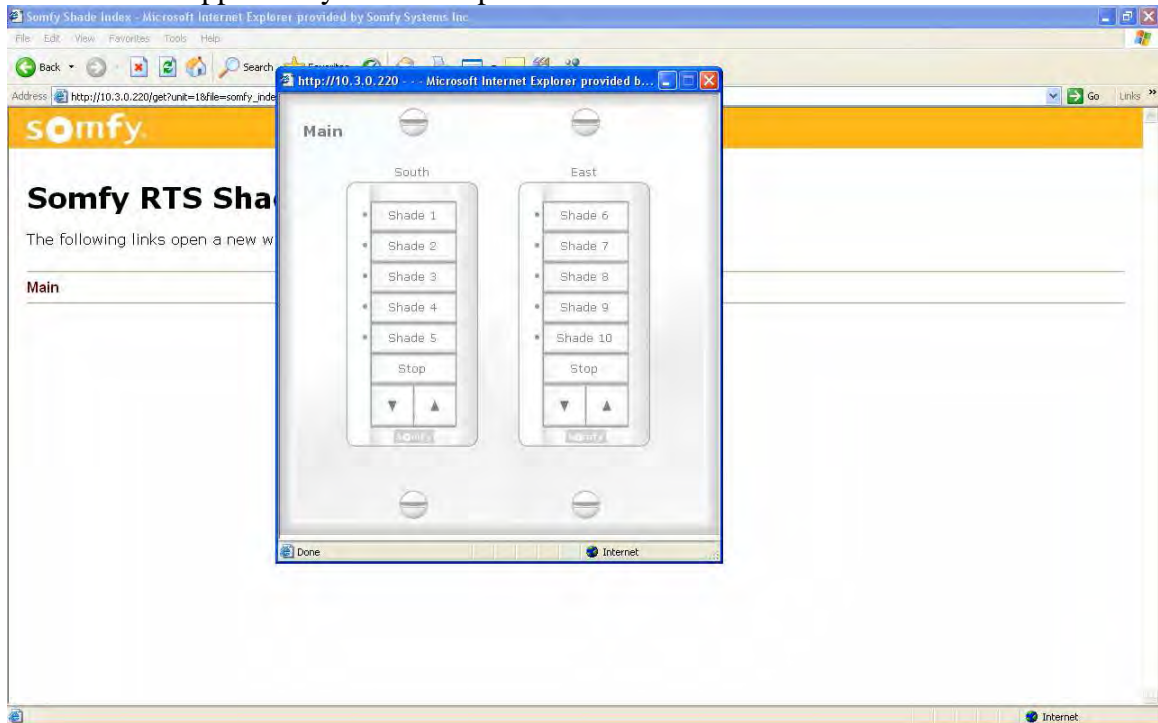


Select Exit Setup and load Control Pages
This page is displayed:



Select Main

The GUI will appear on your Desktop:

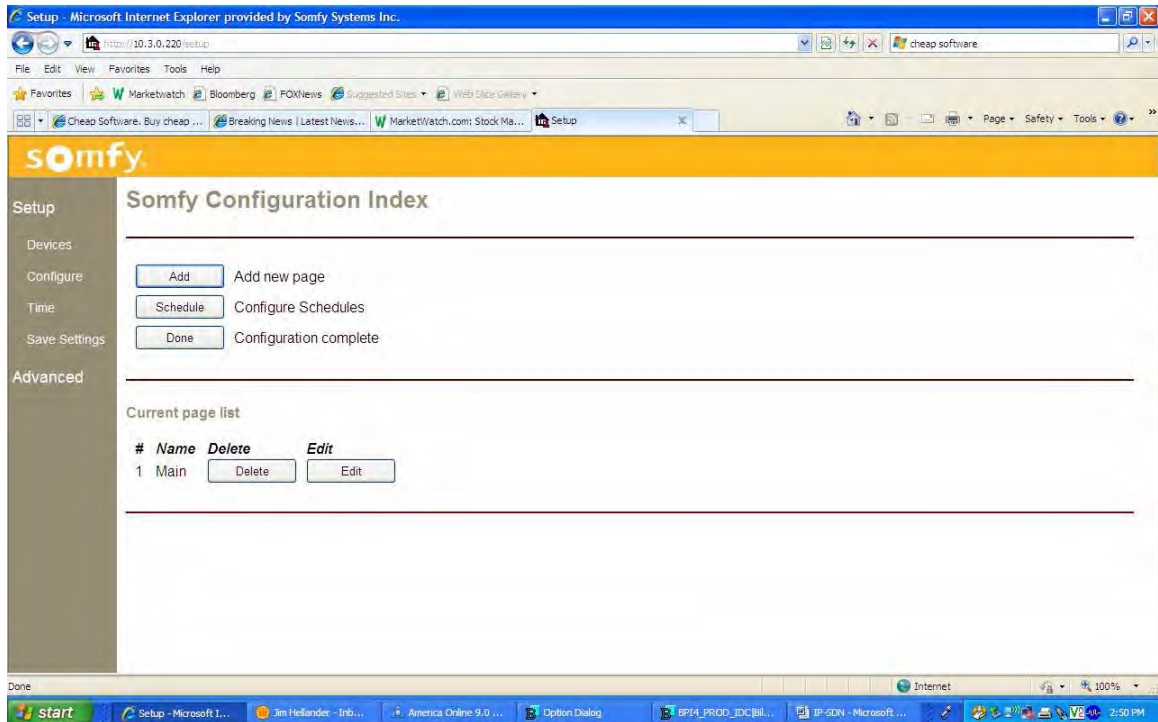


Activate a function by selecting one of the channels and then a command on the GUI

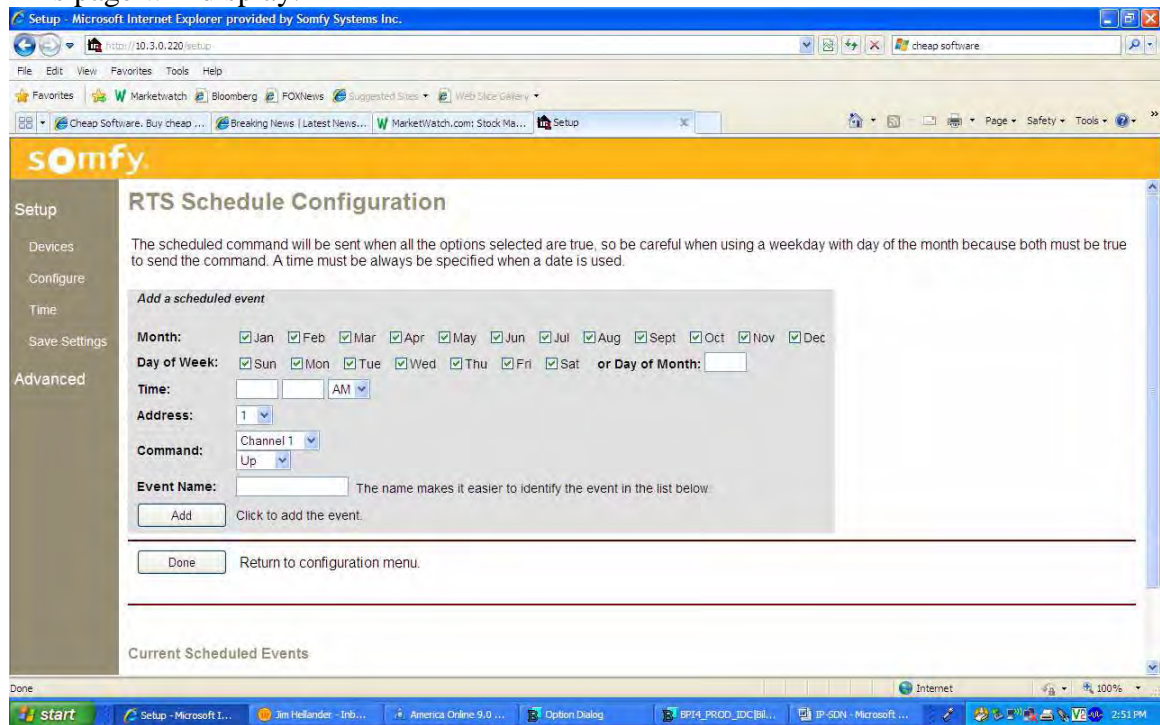
6 Time Schedules (Internet access is required for time schedules)

Choose Configure from the menu on the left and then click on the node name. The following page will display. (type somfy/setup in I.E.)

Choose Schedule.



This page will display:



Enter the required information for the timed event:

Month and Day(s)

Time

URTSII Address (1-16)

RTS Channel

Command

Unique event name

When done then click Add. Repeat the process for each timed event.

When all events are entered, click Done.

Click Done again.

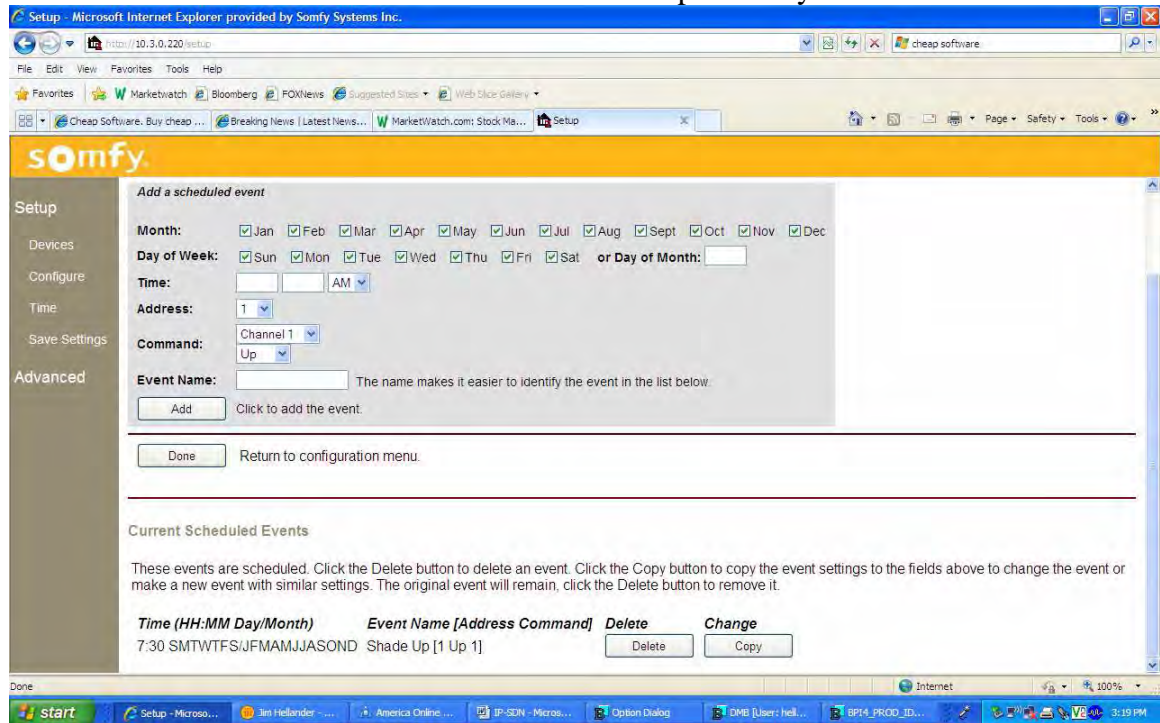
Click Save Settings in left column

Click Save

Click on "Exit Setup and Load Control pages"

A list of GUI pages is shown. Time events are active.

The Schedule screen is the same screen used to edit previously entered events



To edit an event, click copy and make the necessary changes.

Enter unique event name

Click Add.

Delete the original event.

Click Done when editing is complete.

Click Done again.

Click Save Settings in left column

Click Save

Click on “Exit Setup and Load Control pages”

A list of GUI pages is shown. Time events are active

There are no other areas of the Setup that should be accessed.

For technical support call Somfy @ 609-395-1300 #112691, 112143 or 112662.