

# SOMFY CONTRIBUTION TOWARDS LEED BUILDINGS

SOLUTIONS FOR BIOCLIMATIC FAÇADES

Thanks to a strong experience in building projects, with a deep knowledge in dynamic insulation and bio-climatic facades, combining for many different types of buildings comfort, technology and energy management, Somfy is one of your key partner in LEED certification program.

For several parts of LEED calculation, you will get the opportunity to obtain towards 12 to 19 points using Somfy's solutions. Our dedicated teams all around the world, based in our 53 subsidiaries and all connected to our International Specification structure, remain at your disposal to detailed possibilities for your specific projects.

LEED Facts  
REGIONAL PRIORITY: 4Pts

LEED Facts  
WATER EFFICIENCY: 10Pts

LEED Facts  
MATERIAL & RESOURCES: 14Pts

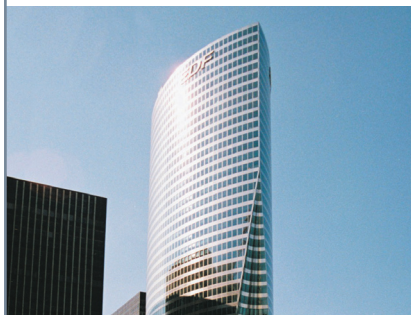
LEED Facts  
SUSTAINABLE SITES: 26Pts



Credit 8 (1 Pt)  
**Light pollution reduction:**  
Somfy To Contribute Towards 1 point by blocking light to go out using automated blinds along with lighting system.

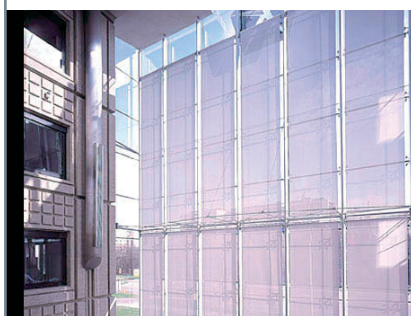
**TOTAL PROJECT:**  
100 base POINTS. 6 possible Innovation in design and 4 regional Priority points Somfy to contribute towards 12 to 19 points (10,9% to 17,2%) & allowing higher classification ranking.

LEED Facts  
INNOVATION & DESIGN: 6Pts



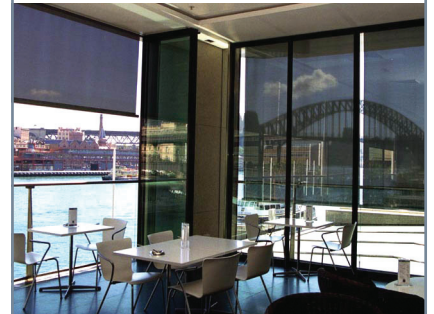
Credit 1.1 (1 to 5Pts)  
**Innovation in design:**  
Somfy To Contribute Towards 1 point by educating the project team members about green building design and construction, the LEED requirements and application process early in the life of the project.

LEED Facts  
ENERGY & ATMOSPHERE: 35Pts



Credit 1 (1 to 19Pts)  
**Optimize energy performance:**  
Somfy To Contribute Towards 11 points by affecting energy saving of 32% of whole building (ASHRAE).

LEED Facts  
INDOOR ENVIRONMENTAL  
QUALITY: 15Pts



Credit 2 (1Pt)  
**Increase ventilation:**  
Somfy To Contribute Towards 1 point by allowing natural ventilation (operable windows) during cool day and/or by night cooling.

Credit 6.1 (1Pt)  
**Controllability of systems-lighting:**  
Somfy To Contribute Towards 1 point thru the management of scenes between light and solar protection systems.

Credit 6.2 (1Pt)  
**Controllability of systems-thermal comfort:**  
Somfy To Contribute Towards 1 point by managing buildings dynamic insulation with Cooling/heating systems.

Credit 7.1 (1Pt)  
**Thermal comfort-design:**  
Somfy To Contribute Towards 1 point by helping creating design in the building envelope for thermal comfort.

Credit 8.1 (1Pt)  
**Daylight & views-Daylight: Views for 75% of the space:**  
Somfy To Contribute Towards 1 point by increasing the luminosity while controlling glare and contrast.

Credit 8.2 (1Pt)  
**Daylight & views-Daylight: Views for 90% of the space:**  
Somfy To Contribute Towards 1 point by increasing the luminosity while controlling glare and contrast. View to outside thru motorized blinds (perforated, roller with special fabric specs).

> Somfy to contribute towards 6 Pts.

somfy®

# LEED FACTS

## SUSTAINABLE SITES: 26 Pts

### Credit 8 (1Pt)

#### Light pollution reduction:

To minimize light trespass from the building and site, reduce sky-glow to increase night sky access, improve nighttime visibility through glare reduction and reduce development impact from lighting on nocturnal environments.

> **Somfy to contribute towards 1 Pt.**

## WATER EFFICIENCY: 10 Pts

## ENERGY & ATMOSPHERE: 35 Pts

### Credit 1 (1 to 19Pts)

#### Optimize energy performance:

To achieve increasing levels of energy performance beyond the prerequisite standard to reduce environmental and economic impacts associated with excessive energy use.

> **Somfy to contribute towards 4 to 11 Pts.**

## MATERIAL & RESOURCES: 14 Pts

## INDOOR ENVIRONMENTAL QUALITY:

15Pts

### Credit 2 (1Pt)

#### Increase ventilation:

To provide additional outdoor air ventilation to improve indoor air quality (IAQ) and promote occupant comfort, well-being and productivity.

### Credit 6.1 (1Pt)

#### Controllability of systems-lighting:

To provide a high level of lighting system control by individual occupants or groups in multi-occupant spaces (e.g., classrooms and conference areas) and promote their productivity, comfort and well-being.

### Credit 6.2 (1Pt)

#### Controllability of systems-thermal comfort:

To provide a high level of thermal comfort system control by individual occupants or groups

in multi-occupant spaces (e.g., classrooms or conference areas) and promote their productivity, comfort and well-being.

### Credit 7.1 (1Pt)

#### Thermal comfort-design:

To provide a comfortable thermal environment that promotes occupant productivity and well-being

### Credit 8;1 (1Pt)

#### Daylight & views-Daylight: Views for 75% of the space:

To provide building occupants with a connection between indoor spaces and the outdoors through the introduction of daylight and views into the regularly occupied areas of the building.

### Credit 8.2 (1Pt)

#### Daylight & views-Daylight: Views for 90% of the space:

To provide building occupants a connection to the outdoors through the introduction of daylight and views into the regularly occupied areas of the building.

> **Somfy to contribute towards 6 Pts.**

## REGIONAL PRIORITY: 4 Pts

## INNOVATION & DESIGN: 6 Pts

### Credit 1.1 (1 to 5Pts)

#### Innovation in design:

To provide design teams and projects the opportunity to achieve exceptional performance above the requirements set by the LEED Green Building Rating System and/or innovative performance in Green Building categories not specifically addressed by the LEED Green Building Rating System.

> **Somfy to contribute towards 1 Pt.**

## SOMFY LEED REFERENCE



### Abu Dhabi Financial Center (ADFC)

- Date: July 2010
- Type: Office
- Controls: Animeo Lon Subnet
- Quantity: 1780
- Gold Leed Certification



### MGM City Center's VDARA Towers

- Date: November 2009
- Type: Hospitality
- Applications: Roman Shades
- Motors: Sonesse 50 RTS
- Quantity: 9000
- Controls: Customized DecoFlex RTS Wall Switches
- Quantity: 2200
- Gold Leed Certification