



SONESSE 30 RS485 TECHNICAL DATA

TS - FPTE

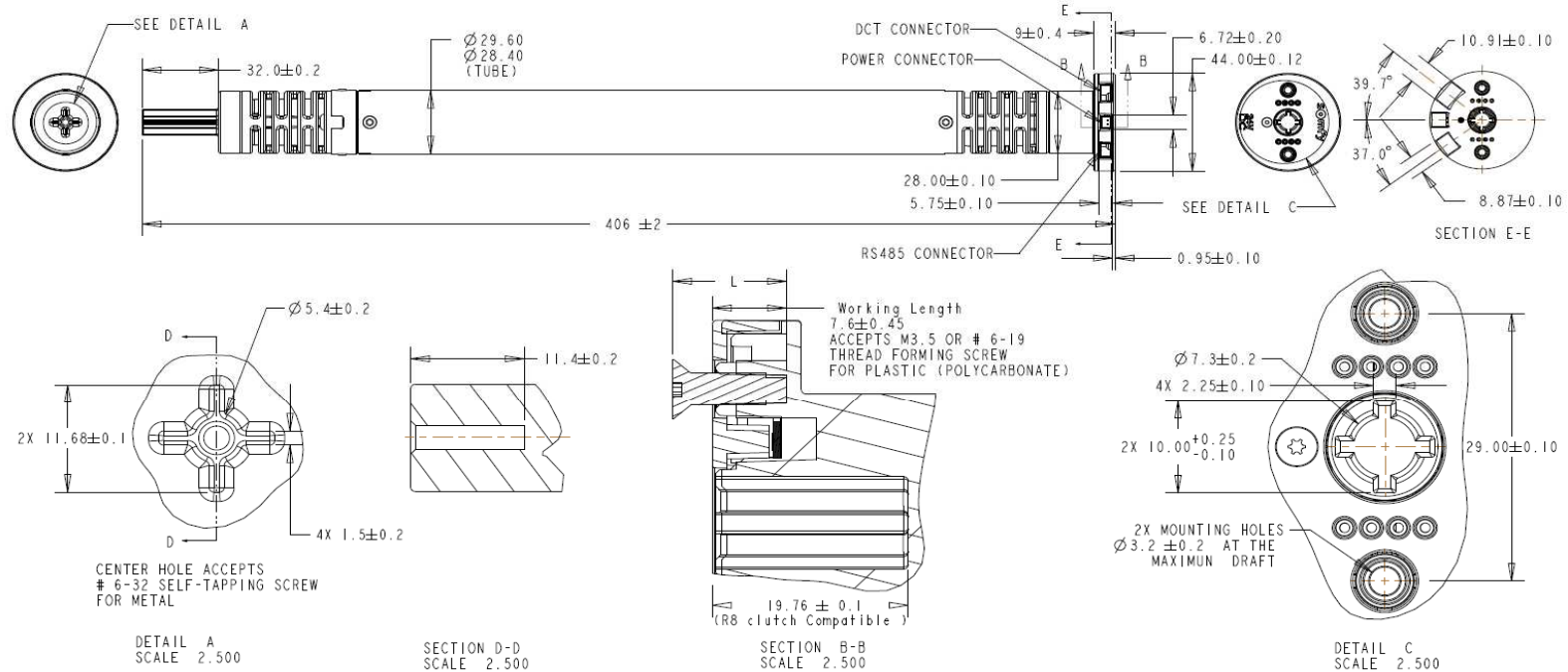
Sonesse 30 RS485 X00

30-Oct-09 Page 1/2

Nominal voltage (VDC)	24 (Regulated)	
Power supply tolerances (VDC)	20 to 28	
Thermal protection	2.5 minutes (software management)	
Motor power cable wires	2 conductors	
Motor power cable section (mm ²)	0.2 (or AWG 24)	
Motor power connector	JST - 2 pins, 2mm pitch	
Motor power cable length (maximum)	2.5 meters	
RS485 cable wires	3 conductors	
RS485 cable section (mm ²)	0.2 (AWG 24) - Twisted pair shielded	
RS485 connector	JST - 3 pins, 2mm pitch	
DCT cable wires	4 conductors	
DCT cable section (mm ²)	0.2 (AWG 24)	
DCT connector	JST - 4 pins, 2mm pitch	
End Limit Adjustment	Using RS485 (controller), or DCT Setting tool	
Capacity of Limit Switch Unit	35 turns each directional rotation at maximum speed	
Repeatability End limits	+/- 5 degree	
Insulation class	III	
Control	RS485 Master Controller and DCT Dry Contact input	
Coding	Somfy RS485 Protocol	
Motor Tube Interfaces	See Somfy catalogue	
Electromagnetic compatibility	CEI 1000-4-2	8kV
	CEI 1000-4-3	10V/m
	CEI 1000-4-4	4kV
	CEI 1000-4-5	3kV
	CEI 1000-4-6	3V/m
	CEI 1000-4-8	3A/m
Safety	EN 60335-1 & 2 EN 50366	
Intrusion Protection (IP)	30	
Operating Temperature (Inside end product)	0°C to +6.0°C (32°F to 140°F)	
Storage Temperature (Warehouse, Shipping,...)	-30°C to 80°C (-22°F to 176°F)	
Noise Level	According to SOMFY measurements (Pressure level measured at 1m from the end product).	

Note: All data measured at Room Temperature (25C / 77F) and Nominal Voltage (24 VDC)

Designation	Nominal Torque (Nm)	Regulated Speed at Nominal Torque (rpm) +/-2 rpm	Stall torque (Nm)	Minimum Tube Inside Diameter (mm)	Current at nominal torque (A)	Max Start Current at nominal torque - user mode (A)	Max Current at Nominal torque - DCT programming mode (A)	Current at stall torque (A)	Minimum Input power per motor (A)	Weight of motor without cables (Kg)	Noise (dBA)
SONESSE 30 RS485	2	28	3,5	31	0,8	1,8	3,2	1,6	1,6	0,5	44
	17.7 Lb-In		31 Lb-In			(<300ms)	(<300ms)			1.1 Lb	



NOTE:
 LENGTH "L" SHOULD BE LONG ENOUGH TO HOLD
 BRACKET FOR DEFINE WORKING LENGTH.

THE SCREW HEAD TYPE SHOULD BE DETERMINED BASED
 ON THE TYPE OF BRACKET TO BE USED

R & D	QUALITY
Name : Roger Heald	Name : Sergio Garcia
Signature	Signature
Date :	Date :