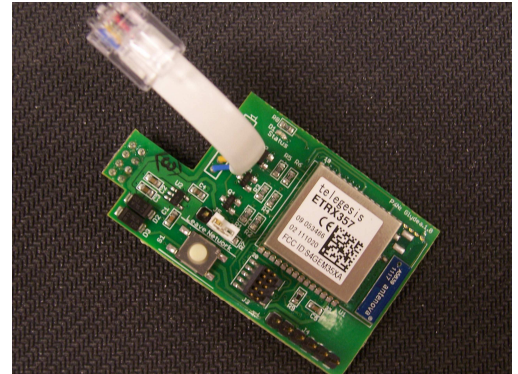


## DESCRIPTION

The Somfy Zigbee Glydea Module (ZbGM) is a Zigbee routing device that resides as an endpoint within a designated Zigbee control network. It receives Zigbee transmissions and converts them to motor control commands for operating Somfy's Glydea 35 and Glydea 60E motors.

Part No: 1870221



Zigbee Glydea Module

---

## INSTALLATION

In order for the Zigbee Glydea Module to become fully operational, the Glydea motor must first be verified to be functional with its drapery. Please refer to the Glydea Motor installation manual for more information.

The Zigbee Glydea Module (ZbGM) is designed to be mounted in the bottom cavity of the Glydea drapery motor. To install the ZbGM, ensure that the power cord is disconnected from the AC outlet and remove the plastic cover on the bottom of the motor (see Figure 1). Remove the protective tape covering the Velcro on the bottom of the ZbGM, and install as shown in Figure 2. Ensure that the 8-pin header is properly seated, and insert the 6-pin modular connector into the modular jack to complete the installation. Do not install the plastic cover at this time.



Figure 1. Plastic Cover

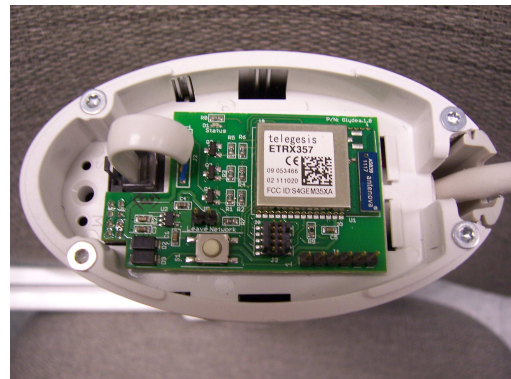


Figure 2. ZbGM Installed

## NETWORK SETUP

### Identify the ZbGM in a Network

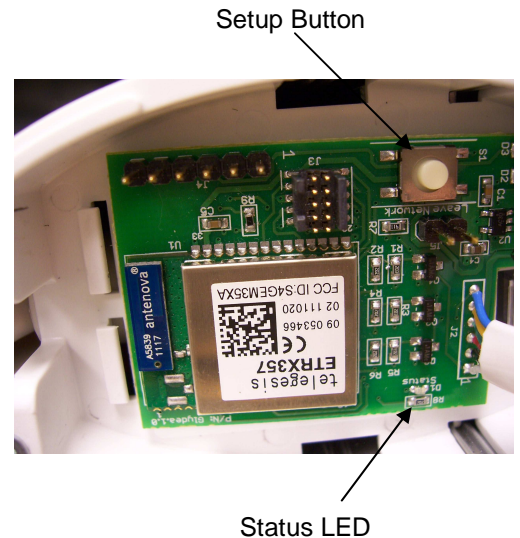
1. Plug the power cord into a standard AC outlet, and verify that the Status LED turns on for approx. five (5) seconds, then goes off. If the Status LED does not turn off, perform a factory reset as outlined in the FACTORY RESET section.

When the Status LED turns off, press & release the Setup Button (within ½ second) several times to verify motor movement.

2. Select the Identify command on your Zigbee Coordinator or Controller.
3. Press & hold the Setup Button for approximately 5 seconds, then release. Wait for the Status LED to turn on (approximately 10 seconds). The ZbGM is identified in the Network when the Status LED remains on.
4. Verify that the ZbGM is operational from your controller and install the plastic cover on the bottom of the motor.

### Disconnecting the ZbGM from a Network

1. Remove the plastic cover from the bottom of the motor.
2. Ensure that the power cord is plugged into a standard AC outlet. Then, select the Disconnect command on your Zigbee Coordinator or Controller.
3. Press and hold the Setup button for approximately 5 seconds. The ZbGM is disconnected from the Network when the Status LED remains off.



---

## MANUAL OPERATION

The Setup Button can be used to manually operate the motor at any time. The Zigbee Glydea Module does not need to be part of a Network for manual operation.

Repeatedly pressing & releasing the Setup Button (within ½ second each time) will drive the motor in an OPEN-STOP-CLOSE-STOP sequence. If the Setup Button is not used to STOP the motor after it has been started, the motor will travel to its fully opened or closed position. In this case, the Setup Button must be pressed and released twice (within ½ second each time) in order to start the motor moving in the opposite direction.

---

## FACTORY RESET

The ZbGM can be reset to factory conditions while the Glydea motor is either installed or removed from its track.

1. Remove the plastic cover from the bottom of the motor.
2. Remove the 6-pin modular connector from the modular jack, and remove the ZbGM from the bottom cavity of the Glydea motor.
3. Ensure that the power cord is plugged into a standard AC outlet. Then, press & hold the Setup Button while plugging the 6-pin modular connector into the modular jack. Do not release the Setup Button.
4. Once the Status LED begins to flash, release the Setup Button. The ZbGM will be reset to factory condition when the Status LED remains off.

---

## ZIGBEE CERTIFICATION

Zigbee Certification of the Zigbee Glydea Module is pending.

---

## ZIGBEE GLYDEA MODULE ELECTRICAL SPECIFICATION

Voltage Input: +5VDC supplied by the Glydea Motor

Power Consumption: 30 mA max. @ +5VDC.

---

## ORDERING INFORMATION

<u>Description</u>	<u>Part Number</u>
Zigbee Glydea Module	1870221
Glydea35 Motor	1001536
Glydea60E Motor	1001538

---

## CONTACT SOMFY

### Somfy Technical Support USA

**800-647-6639**

Monday through Friday 8:00AM – 8:00PM EST

#### Somfy Customer Service Email USA

North East Region [CSRNE@somfy.com](mailto:CSRNE@somfy.com)

Southeast Region [CSRSE@somfy.com](mailto:CSRSE@somfy.com)

Central Regions [CSRNE@somfy.com](mailto:CSRNE@somfy.com)

West Coast Region [CSRWC@somfy.com](mailto:CSRWC@somfy.com)